

Wiring Instructions

IntelliFlex™ SC1 Control by Draper

Part Number C156.065

Please Note

- ① Make sure power is disconnected before installing controls.
- ② SC1 has a rated switching capacity of 6 amps.
- ③ SC1 is a line voltage control, designed to operate one motor. Activation by Low Voltage input commands. If you want to switch two or more motors, ISO relays must be installed in the circuit.
- ④ SC1 is electrically "hot" on the back of the circuit board. Installers should use an INS-SC1 (Draper Part Number C199.004) if the SC1 is being installed in a junction box (see diagram).

Electrical Specifications

Input:

Data: +5v AC BUS Commands
 Low Voltage: Dry Contact—0v AC
 Line Voltage: 115 V AC +/- 10%

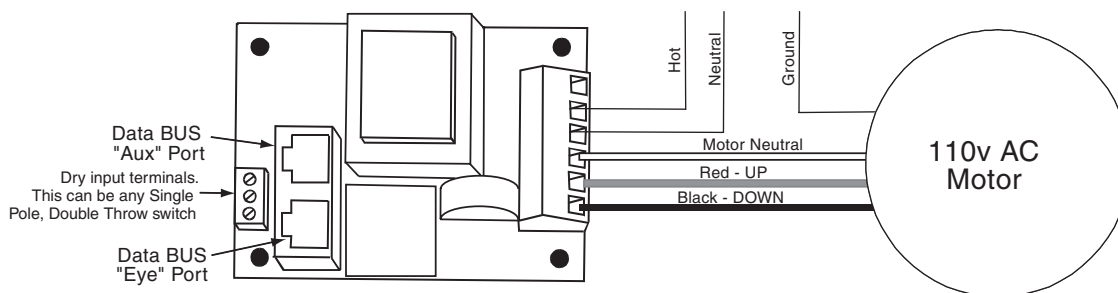
Output:

115V AC 6 FLA per SC1 1/3 HP

Dimensions:

2 1/8" W x 3 1/4" L x 7/8" H.
 One SC1 fits in a **deep** single gang J-Box.

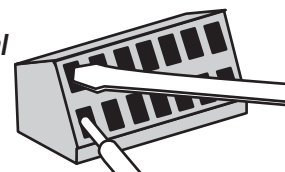
Wiring Instructions for Controlling One Shade with One SC1



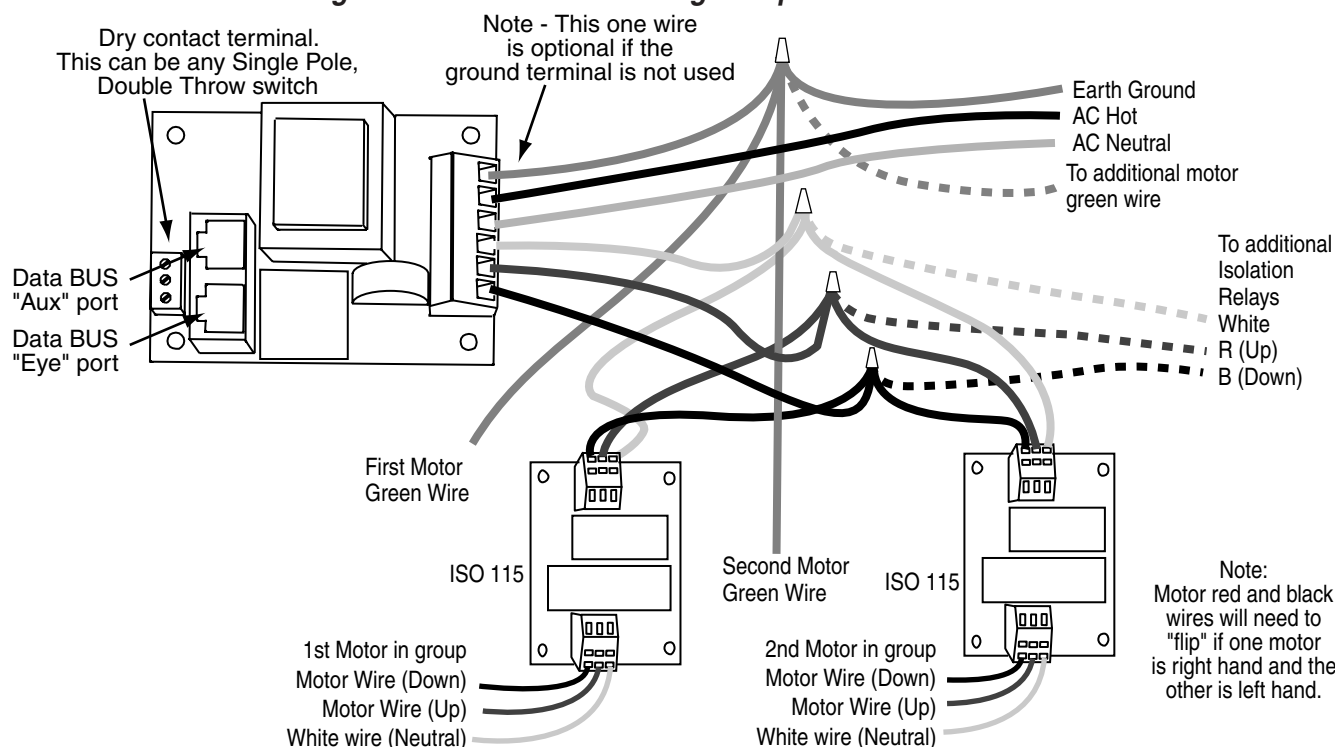
Please Note: When connecting data "BUS," never link an "Eye" port to another "Eye" port. You may link your BUS from "Eye" to "Aux" or "Aux" to "Aux." All BUS command input devices must connect to an "Eye" port in order to power the input device.

Inserting wire into spring terminal

- ① Open spring terminal by inserting screwdriver into upper opening.
- ② Insert wire into lower opening.
- ③ Remove screwdriver.



Wiring Instructions for Controlling Multiple Shades with One SC1



DRAPER

411 S. Pearl St., Spiceland, IN 47385 USA ■ 765-987-7999 ■ fax 765-987-7142
 e-mail draper@draperinc.com ■ www.draperinc.com

Copyright ©2006 Draper Inc.

Form SC1_WD06

Printed in U.S.A.

If you encounter any difficulties installing/wiring your IntelliFlex control, call your dealer or Draper, Inc., Spiceland, Ind., (765) 987-7999; fax (765) 987-7142; or e-mail draper@draperinc.com.