

Dimensions & Data

Size H x W	Case Length*	Net Wt. (lbs.)	Qty.
50" x 50"	6'2"	105	
60" x 60"	7'	115	
70" x 70"	7'10"	120	
84" x 84"	9'	140	
6' x 8'	10'	155	
8' x 8'	10'	160	
7' x 9'	11'	160	
9' x 9'	11'	170	
8' x 10'	12'	180	
10' x 10'	12'	185	
9' x 12'	14'	205	
12' x 12'	14'	210	

Please Check All Appropriate Selections

Select Viewing Surface:

- ☐ Fiberglass Matt White
☐ Fiberglass Glass Beaded
☐ Optional F1500 (Through size 70" x 70")

Select Case Construction:

- ☐ Standard
☐ Offset
☐ Extended Hinges for Attachment of Ceiling Tile
 (Weight not to exceed 16 oz. per sq. ft.)

Optional Accessories:

- ☐ Extra Drop
 (Total screen height cannot exceed 12')
 Select white or black _____
 Length of extra drop required _____
 Number of control stations required: 1, 2, 3, or 4.
☐ 115 Volt
☐ 24 Volt
 ☐ Radio Frequency Remote Control (only with 24V)
 ☐ Infrared Remote Control (only with 24V)
☐ Key Operated Switch
☐ Power Supply Switch (On-off)
☐ 3-Position Control
☐ 3-Position Control with Hinged Locking Coverplate
☐ Black Masking Borders
☐ Video Interface Control
 ☐ VIC-115
 ☐ VIC-12
 ☐ VIC-6

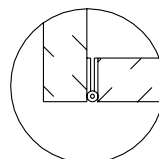
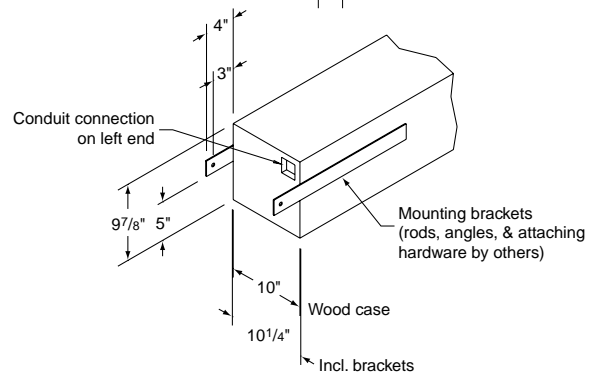
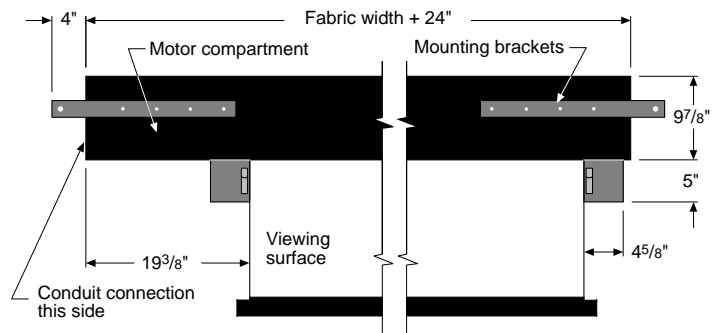
Specifications—Ambassador

_____ Projection screens, size(s) _____
 (h x w), electrically operated 110-120v. AC, 60 Hz. Motor to be 3-wire, instantly reversible, lifetime lubricated, with thermal overload protector and mechanical brake. Motor mounted on rubber vibration insulators. Preset, accessible limit switches. Entire drive unit easily removed from case. 3-position control switch (or switches-specify number) to stop or reverse screen at any point. Control(s) complete with cover plate. Metal roller, 5" OD. Zinc plated roller brackets with double row radial ball bearings. Viewing surface of (fiberglass matt white/glass beaded/Optional F1500), fire and mildew resistant.

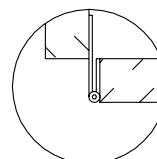
Case of $\frac{3}{4}$ " warp resistant composition wood, with hinged panel for access to motor compartment, finished with primer coat of paint. Motor compartment metal lined. Bottom of case enclosed by two panels. One panel mounted on a continuous hinge, to open and close automatically when screen operates. Hinge mounted to allow matching of bottom panel to ceiling. Second panel semi-permanently attached to wall of case.

Entire unit certified by Underwriters' Laboratories, Inc. for the U. S. and Canada.

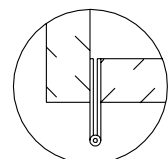
Case Dimensions & Construction Details



Standard
Construction



Offset
Construction



Extended hinges for
ceiling tile attachment
(wt. not to exceed 16 oz. per sq. ft.)

PROJECT: _____

ARCHITECT: _____

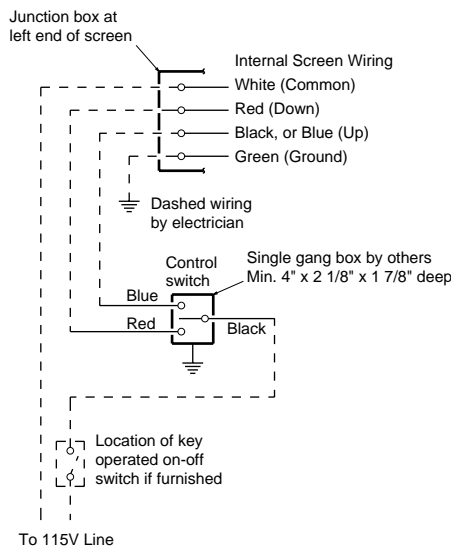
CONTRACTOR: _____

SUPPLIER: _____

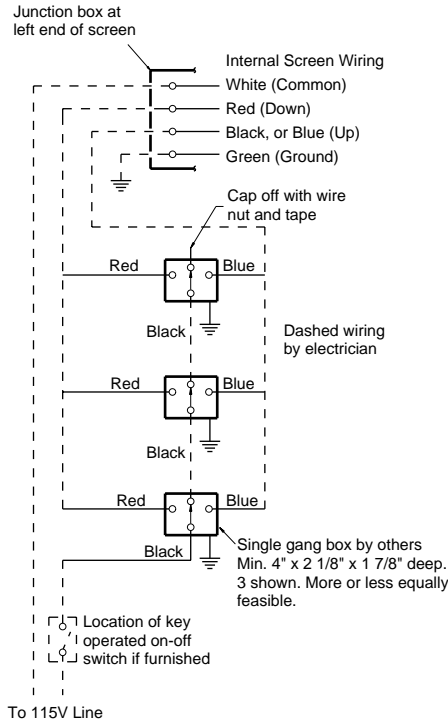
DATE: _____ REVISED: _____

Wiring Diagrams

Single Station Control



Multiple Station Control



Low Voltage (& Wireless) Control Wiring Diagram

