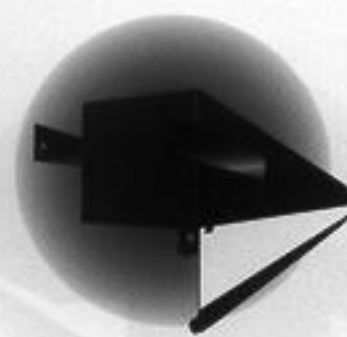


Ambassador

Electrically Operated Projection Screen with Automatic Ceiling Closure

Designed for boardrooms, conference and meeting rooms.



The DRAPER AMBASSADOR is a heavy-duty electrically operated screen designed specifically for recessed installation above any type of ceiling. The AMBASSADOR is hand crafted of the finest quality components, assuring fast, silent, dependable operation.

The AMBASSADOR features a fully automatic ceiling closure, which totally conceals the screen when not in use. At the touch of a switch the ceiling closure opens and the viewing surface appears. The viewing surface retracts into the ceiling when the switch is reversed, and the ceiling panel closes tightly. Adds an element of showmanship to any AV presentation. The ceiling closure can be finished by the contractor to match the ceiling.

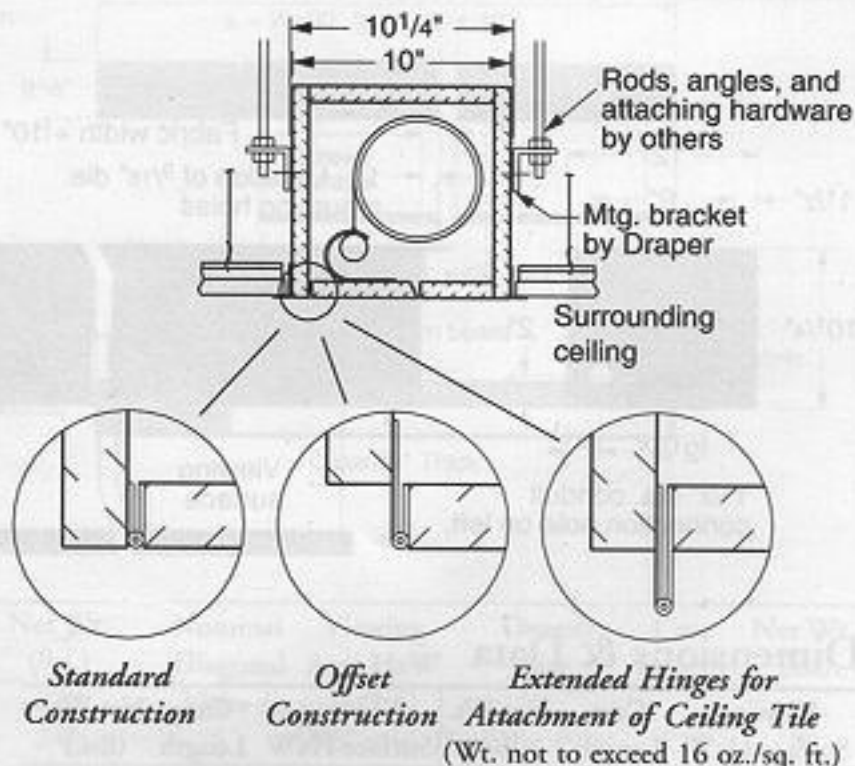
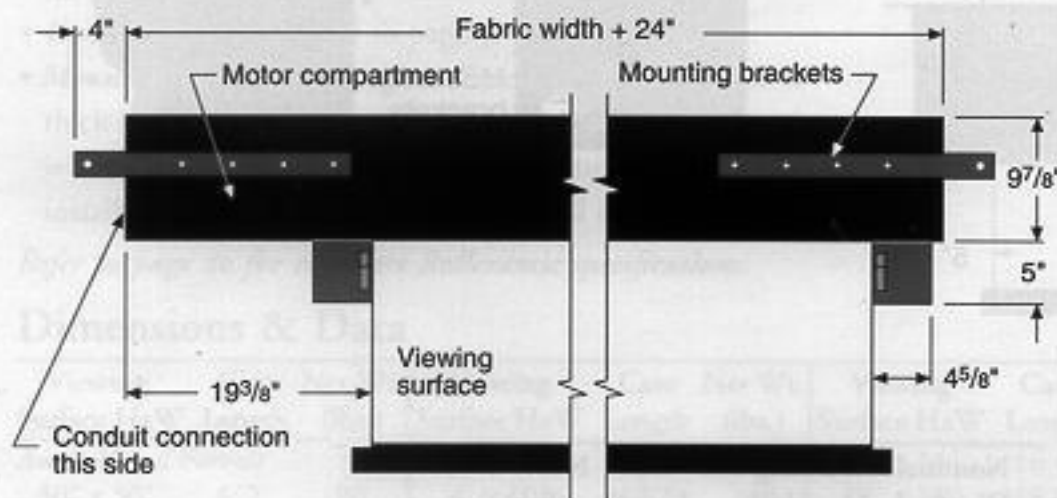
Available with fiberglass matt white or glass beaded viewing surface. All surfaces are flame and mildew resistant. Large screens require horizontal seams.

3-position switch, standard, controls screen from any remote position.

Optional Equipment

- **Extra Drop**—Up to 12' total screen height, either white or black.
- **Black Masking Borders**
- **Control Options**—Refer to page 5.

Refer to page 19 for complete specifications for the Ambassador.



Dimensions & Data

Viewing Surface HxW	Case Length	Net Wt. (lbs.)	Viewing Surface HxW	Case Length	Net Wt. (lbs.)
50" x 50"	6'2"	105	9' x 9'	11'	170
60" x 60"	7'	115	4' x 10'	12'	170
70" x 70"	7'10"	120	8' x 10'	12'	180
84" x 84"	9'	140	10' x 10'	12'	185
6' x 8'	10'	155	5' x 12'	14'	200
8' x 8'	10'	160	9' x 12'	14'	205
7' x 9'	11'	160	12' x 12'	14'	210

Case dimensions—9 7/8" high x 10 1/4" wide. Mounting brackets extend 4" in length beyond ends of case.