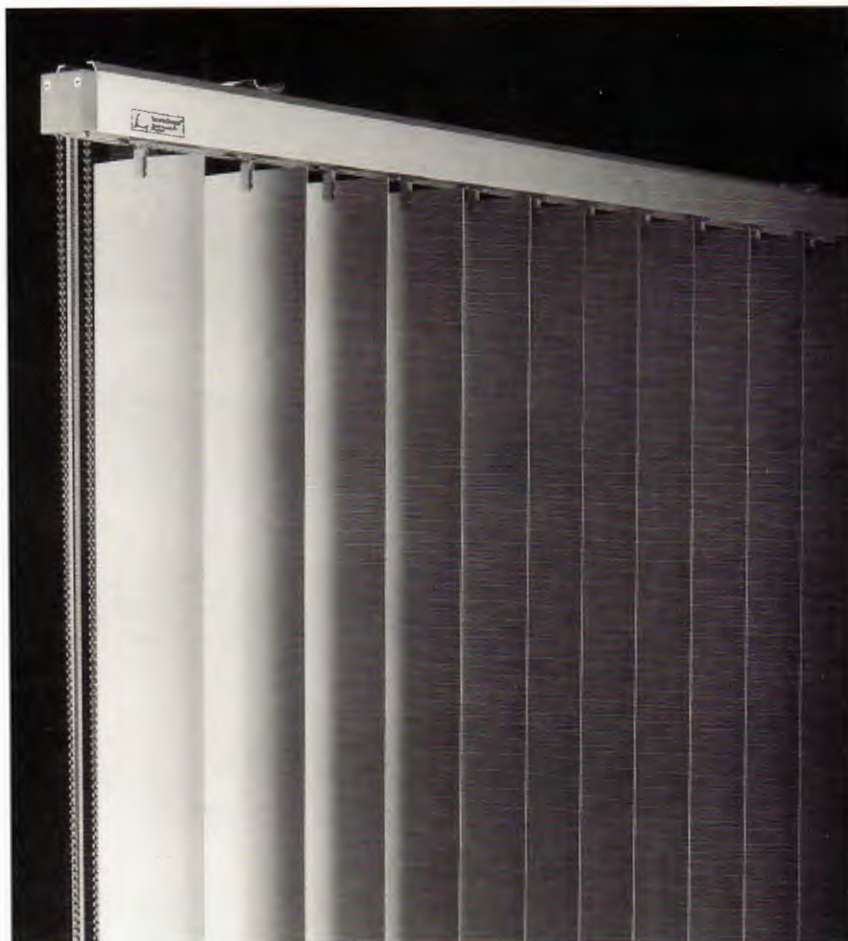


ZIRLON WHEELED SYSTEM

Versatile top quality vertical headrail system for commercial office applications.



Key Features:

- Carriers stack in $\frac{1}{3}$ less space
- Self-lubricating wheeled system glides smoothly
- Vanes rotate 360 degrees
- Available in several vane widths
- Easy to clean windows - vanes move away from control end effortlessly
- One Year Warranty
- Optional convenience features: AutoRotate and AutoWand

Product Overview

Exclusive to LouverDrape, the Zirlon Wheeled System was designed for durability and superior performance even when used by people unfamiliar with vertical blinds--such as in hospitals, schools and hotels.

The Zirlon system features carriers that are only $\frac{5}{16}$ " wide instead of the standard $\frac{7}{16}$ ", which means that the blinds will stack in considerably less space when drawn. For design purposes, the smaller stacking advantage also means that a smaller wall pocket is needed to contain the drawn blinds.

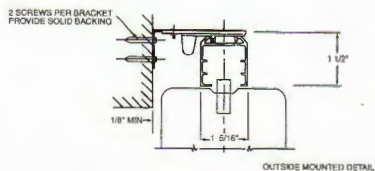
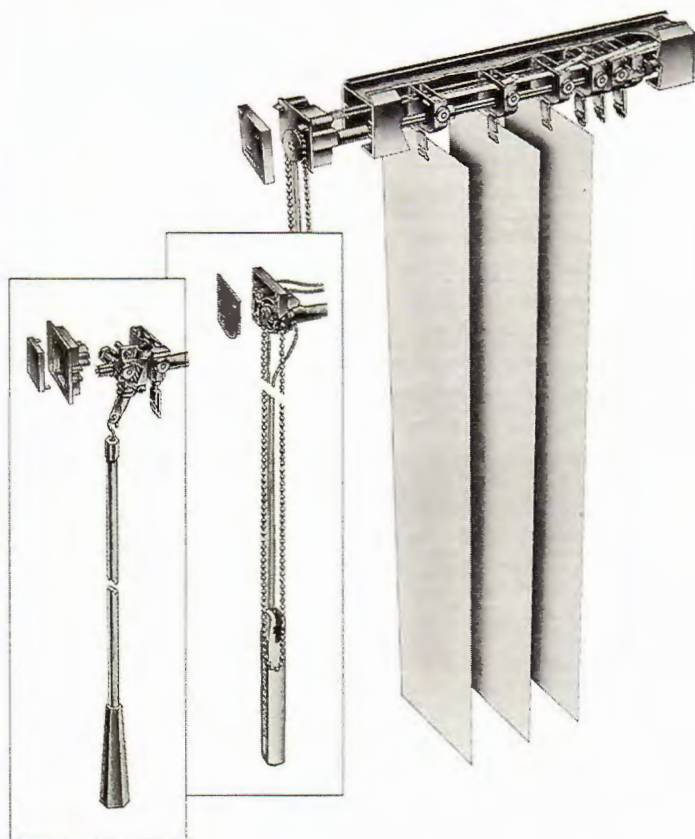
The Zirlon Wheeled Headrail System is compatible with LouverDrape's entire line of vinyl, vinyl with fabric insert, perforated vinyl and fabric vanes. In addition to the standard $3\frac{1}{2}$ " wide vanes, the Zirlon system can also accommodate $2\frac{1}{8}$ " mini-verticals in three styles of pearl and matte colors. This narrower vane is especially effective for smaller windows and interior relites.

Two options are available on the Zirlon Wheeled Headrail System which simplify the operation of the blinds:

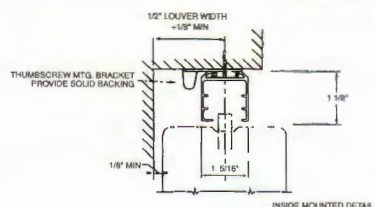
AutoRotate automatically rotates vanes to the open position when the traverse cord is pulled. This exclusive LouverDrape option protects the lead carriers and connecting links from damage which may occur when attempting to traverse the blinds with the vanes in the closed position. Because the AutoRotate features eliminates vane jams, it is ideal for use in hospitals, schools, apartments, or condominiums where verticals may be operated by people unfamiliar with their use.

AutoWand replaces the usual cord and chain controls with a single plastic wand which opens and closes the vanes as well as glides them along the track to traverse the blinds. An especially desirable safety feature in schools and hospitals, AutoWand provides insurance against future service repairs.

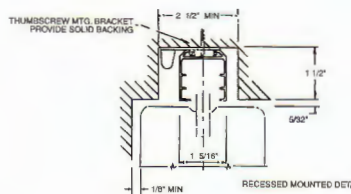
ZIRLON WHEELED SYSTEM



OUTSIDE MOUNTED DETAIL



INSIDE MOUNTED DETAIL



RECESSED MOUNTED DETAIL

Product Specifications

For more detailed specifications please reference Zirlon product Guide Specifications.

Part II -- Products

- A. Zirlon Wheeled System Vertical Blind manufactured by Levolor Home Fashions
- B. One Year Warranty
- C. Materials:

- ☐ **Headrail** shall be of anodized extruded aluminum alloy 1 5/16" wide by 1 7/16" high. Headrail finish shall be (select one):
 - a. Clear anodized aluminum.
 - b. Deep Bronze (per foot upcharge).
 - c. Ivory (per foot upcharge).
 - d. Custom color (quoted upcharge).
- ☐ **Carriers** shall be made of Delrin and shall traverse on two Zirlon wheels. Each carrier shall be nominally 5/16" wide for minimal stack.
- ☐ **Rotation Control** shall consist of a #6 nickel-plated bead chain to synchronize and actuate 360 degree rotation.
- ☐ **Traversing Control** shall allow blinds to traverse left to right, right to left or split. Blinds shall traverse by means of a non-stretch traverse cord traveling along smooth surfaces.
- ☐ **Installation Brackets** shall be provided for overhead, wall or ceiling installations using the following:
 - a. Thumb clamps.
 - b. Angle brackets.
- ☐ **Vanes** shall be (select one):
 - a. Extruded PVC nominally 2 1/8" wide. Perforated option available.
 - b. Extruded PVC nominally 3" wide.
 - c. Extruded PVC nominally 3 1/2" wide. Perforated option available.
 - d. Extruded PVC nominally 4 3/8" wide.
 - e. Extruded PVC nominally 5" wide.
 - f. Fabric nominally 2 1/8" wide.
 - g. Fabric nominally 3 1/2" wide.
- ☐ **Options** shall include:
 - a. AutoRotate which allows vanes to automatically rotate to the open position when traverse cord is pulled.
 - b. AutoWand which uses a wand control to both rotate and traverse vanes.

LouverDrape®

Levolor Home Fashions
Contract Division
4110 Premier Dr.
High Point, NC 27265
1-800-221-6803

© Copyright 1996 Levolor Home Fashions. All rights reserved. US and non-US patents and patents pending. Product specifications are subject to change without notice. Printed in the USA.

Contract Customer Service
1-800-826-8021

R1085000