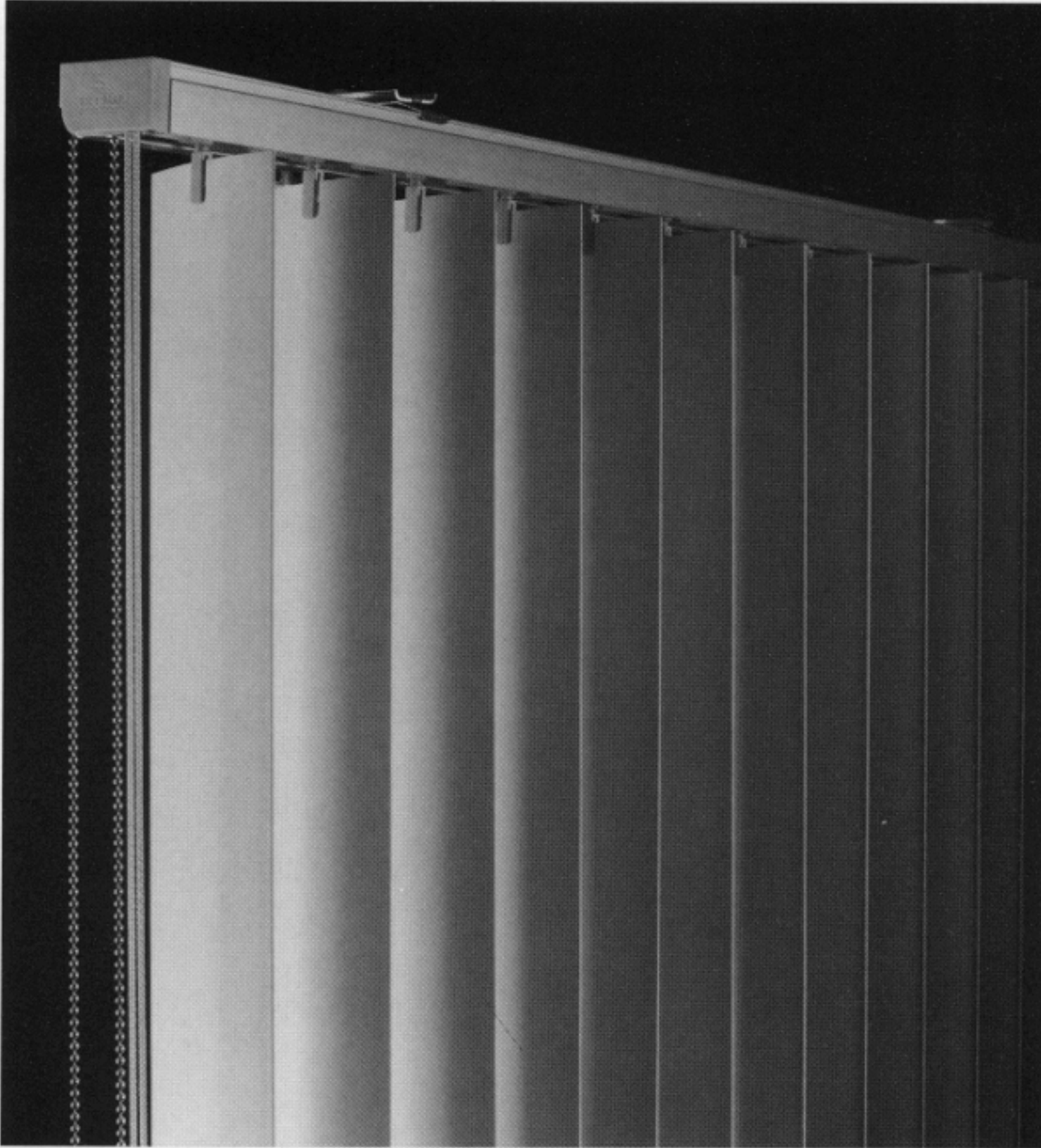




## MRCSII VERTICAL BLIND

An economical yet heavy duty cord stack headrail system ideal for commercial applications.



### Key Features:

- Symmetrically centered carriers
- Durable design for oversized windows
- 360° rotation
- One Year Warranty

### Product Overview

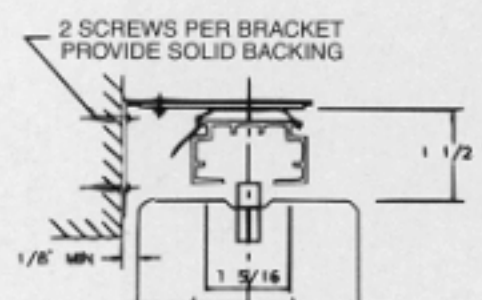
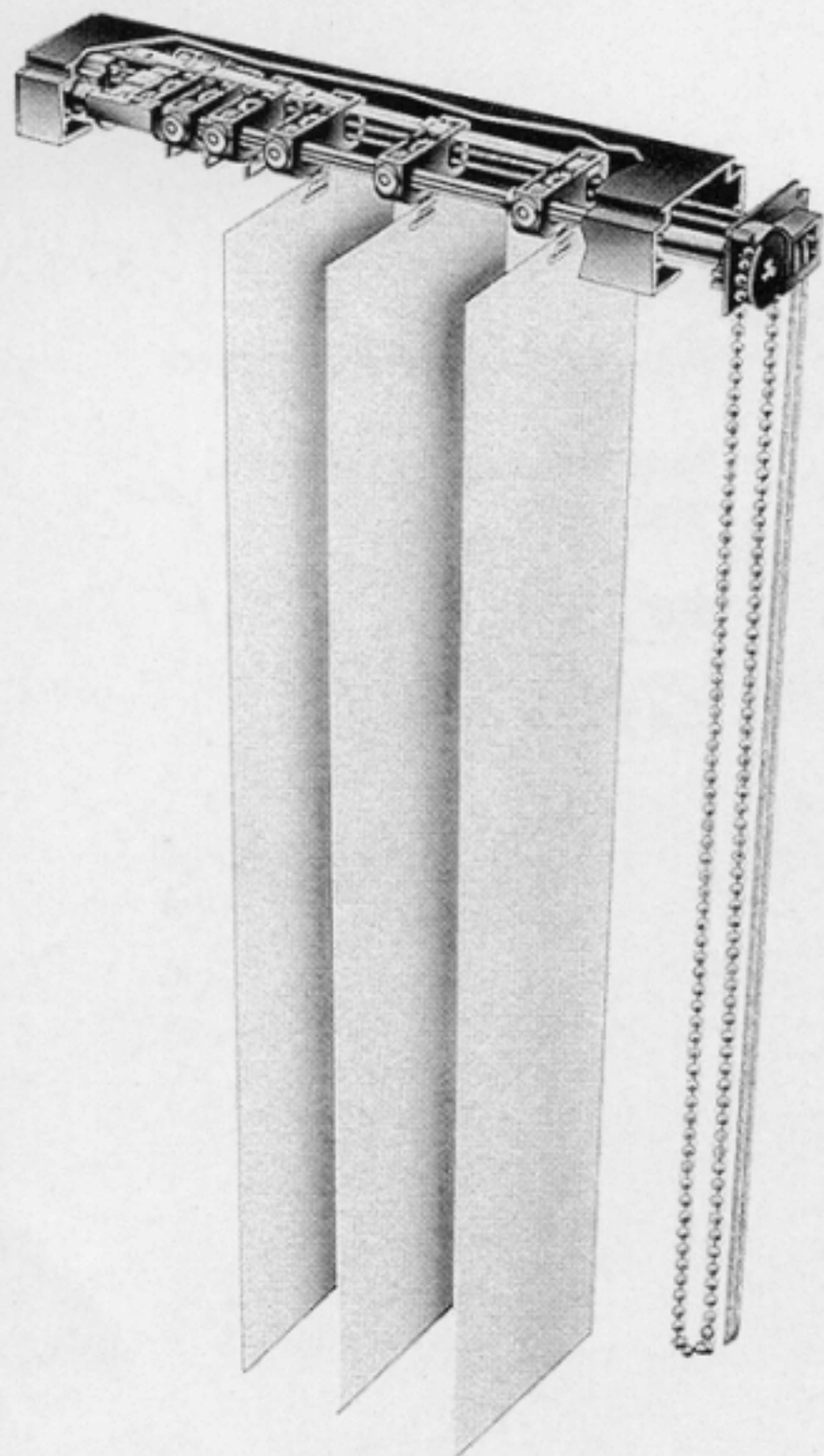
When a rugged yet economical headrail system is specified for a heavy duty commercial installation, LouverDrape's MRCSII (Mono Rail, Cord Stack) headrail system is a good choice. The MRCSII has smooth cord traverse function and 360° rotation.

For design flexibility, the side stack is not more than  $\frac{7}{16}$ " per vane. Vane carriers are symmetrically centered which enables the draw and rotation controls to be reversed in the field. In addition, stacking can be one-way draw, split draw, off-center draw, or center stack. The MRCSII is available with top headrail only.

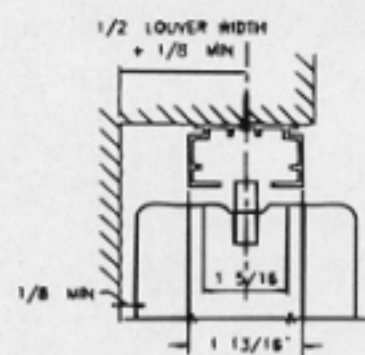
The MRCSII Headrail System is compatible with LouverDrape's entire line of vinyl, vinyl with fabric insert, perforated vinyl and fabric vanes. In addition to the standard 3  $\frac{1}{2}$ " wide vanes, the MRCSII system can also accommodate 2  $\frac{1}{8}$ " mini-verticals in three styles of pearl and matte colors. This narrower vane is especially effective for smaller windows and interior relites.



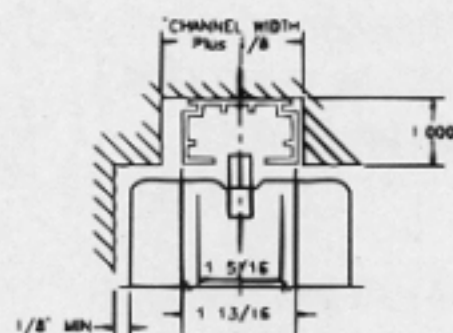
# MRCsii VERTICAL BLIND



OUTSIDE MOUNTED DETAIL



INSIDE MOUNTED DETAIL



RECESSED MOUNTED DETAIL

## Product Specifications

For more detailed specifications please reference MRCsii product Guide Specifications.

### Part II -- Products

A. MRCsii Vertical Blind manufactured by Levolor Home Fashions

B. One Year Warranty

C. Materials:

- ☐ **Headrail** shall be of anodized extruded aluminum alloy 1 <sup>13</sup>/<sub>16</sub>" wide by 1" high. Headrail finish shall be (select one):
  - a. Clear anodized aluminum.
  - b. Custom color (quoted upcharge).
- ☐ **Carriers** shall be made of Delrin or equal and shall traverse on Delrin wheels. Each carrier shall be nominally <sup>7</sup>/<sub>16</sub>" wide for minimal stack.
- ☐ **Rotation Control** shall consist of a #6 nickel-plated bead chain to synchronize and actuate 360 degree rotation.
- ☐ **Traversing Control** shall allow blinds to traverse left to right, right to left or split. Blinds shall traverse by means of a non-stretch traverse cord traveling along smooth surfaces.
- ☐ **Installation Brackets** shall be provided for recessed installation using the following:
  - a. Snap-in clamps.
  - b. Angle brackets.
  - c. Direct mount screws.
- ☐ **Vanes** shall be (select one):
  - a. Extruded PVC nominally 2 <sup>1</sup>/<sub>8</sub>" wide. Perforated option available.
  - b. Extruded PVC nominally 3 <sup>1</sup>/<sub>2</sub>" wide. Perforated option available.
  - c. Fabric nominally 2 <sup>1</sup>/<sub>8</sub>" wide.
  - d. Fabric nominally 3 <sup>1</sup>/<sub>2</sub>" wide.

**LouverDrape®**

Levolor Home Fashions  
Contract Division  
4110 Premier Dr.  
High Point, NC 27265  
1-800-221-6803

© Copyright 1996 Levolor Home Fashions. All rights reserved. US and non-US patents and patents pending. Product specifications are subject to change without notice. Printed in the USA.

Contract Customer Service  
1-800-826-8021

R1087000

## MRCsii VERTICAL BLIND

An economical yet heavy duty cord stack headrail system ideal for commercial applications.

### PART I – GENERAL

#### 1.01 SCOPE

- A. Furnish and install LouverDrape blinds, provided by Levolor Home Fashions, 4110 Premier Drive, High Point, NC 27265, in accordance with specifications, drawings, and contract documents.
- B. Related work specified elsewhere.

#### 1.02 QUALITY ASSURANCE

- A. Installer's qualifications:
  - 1. The installer shall be a firm approved by Levolor Home Fashions Contract Division.
  - 2. The installer shall be qualified to install the product specified, as demonstrated by prior experience.
- B. Job mock-up: (Describe)

#### 1.03 SUBMITTALS

- A. Product information: Submit LouverDrape product literature and installation instructions.
- B. Shop drawings: Indicate field-measured dimensions of opening which are to receive blinds, details on mounting surface and sill conditions, and details of corners and conditions between adjacent blinds.
- C. Color samples: Submit a sample of each type and color of material specified.

#### 1.04 DELIVERY, STORAGE, AND HANDLING

- A. Packing and Shipping
  - 1. Materials shall be delivered to the Project in LouverDrape's original unopened packaging with labels intact.
- B. Storage:
  - 1. Materials shall be stored in a clean area which is free of corrosive fumes, dust, and away from construction activities.
  - 2. Materials shall be stacked horizontally using plastic or wood shims such that drainage and ventilation are provided for,

and such that water cannot accumulate in, about or upon the containers.

3. Stacks shall be covered with tarpaulins or plastic such that ventilation is provided for, and such that contaminants are prevented from contacting surfaces.

#### 1.05 PROJECT/SITE CONDITIONS (BEFORE PRODUCT INSTALLATION BEGINS)

- A. Roof must be tight, windows and frames installed and glazed, and interior doors hung.
- B. Wet work including concrete, masonry, plaster, stucco, terrazzo, sheetrock, spackling, and taping (including sanding) shall be complete and dry.
- C. Ceilings, window pockets, electrical, and mechanical work above the product shall be complete.
- D. Electrical power (110 volt AC) shall be available for installer's tools within 500 ft. of product installation areas.

#### 1.06 WARRANTY

- A. One Year Limited Warranty: Levolor Home Fashions Contract Division shall repair or replace for one year from the date of purchase of the blind, at its option, without charge, any part found defective in workmanship or material as long as the blind remains in the same window for which it was purchased.

### PART II – PRODUCTS

#### 2.01 MANUFACTURER AND PRODUCT DESCRIPTION:

- A. Acceptable product: LouverDrape MRCsii Vertical Blind Headrail System manufactured by Levolor Home Fashions.

#### B. Materials:

- 1. Headrail shall be of extruded anodized aluminum alloy 1 13/16" wide x 1" high. Capped ends, provided with Delrin, or equal, sprocket wheels. Available with top headrail only.

2. Carriers shall be made of 7/16" wide Delrin plastic or equal and shall traverse on Delrin wheels. No glides or sliders shall be allowed. Carriers shall have one piece spur gear and Delrin hook.

3. Spacer links of flexible stainless steel 1/4" wide shall space and stabilize carriers by passing smoothly between stabilizer guides on each carrier.

4. Vanes shall rotate 360 degrees and pack, when traversed, into no more than 7/16" per vane. When rotated, 3 1/2" vanes shall overlap not less than 3/8".

5. Rotation mechanism shall consist of a #6 nickel-plated bead chain to synchronize and actuate 360 degree rotation by turning a keyed aluminum rod actuating plastic worm and plastic spur gear in each carrier in headrail. Gears shall provide no less than 10-to-1 mechanical advantage and keep vanes fixed until reset by control. No cord or 1-to-1 ratio mechanisms will be allowed.

6. Traversing mechanism shall allow vertical blinds to traverse left to right, right to left or split. Blinds shall traverse by means of a non-stretch traverse cord.

7. Cord Weight shall be of molded ABS plastic filled for weight. Cord weight shall be readily removable without detaching cord from headrail.

8. End Caps: Control and return end cap assemblies shall be molded to match aluminum extrusion profile and provide contemporary aesthetic appearance.

9. Installation Brackets shall be provided for recessed installation using snap-in clamps, angle brackets, or direct mount screws. Brackets shall be designed to facilitate installation and removal of track.

10. Vane spacing: Normal vane spacing on center is a fraction of an inch less than the vane size. For example:

Vane width: 2 1/8" Spacing on center 1 3/4"  
Vane width: 3 1/2" Spacing on center 3 1/8"

11. Vanes shall be selected from the following (select one): Control location and Stack Draw should be specified.



- a. Vanes shall be extruded of 100% GEON solid vinyl or equal. The vinyl shall also contain ultra violet inhibitors. Calcium carbonate content will not exceed 15% on standard colors. Vanes shall withstand 140° heat chamber for thirty minutes with out distortion, and with no more shrink and stretch than 1/2 of 1%. A ten-foot vane suspended from the center of one end shall hang straight with no twist, warp or bow. Vanes shall be permanently flame resistant, if unaltered. Certificate of flame retardancy must be provided

Vanes shall be selected from the following widths and styles:

- i. Widths:
  - nominally 2 1/8" wide
  - nominally 3 1/2" wide
- ii. Styles:
  - solid flat
  - solid curved
  - narrow ridged flat
  - narrow ridged curved
  - wide ridged curved
  - perforated (various openness factors available)

An optional key hole punch with a corrosion-free chain may be specified to control swaying and keep unit functioning as a whole.

- b. Fabric vanes shall be available in two styles:

- i. Free Hanging: Vanes shall be free hanging woven or slit to 2 1/8" or 3 1/2" (select one) wide, and color fast. Vanes shall have a steel weight inserted into a sewn pocket at bottom of vane. An optional clip-on corrosion-free, nickel plated steel chain shall be attached to weights to control swaying and keep unit functioning as a whole (if specified). Certificate of flame resistancy must be provided.
- ii. EverClear Louver Groover: Vanes shall be of color fast fabric slit to appropriate width, slid into groover channel. Groover shall be extruded of 100% GEON vinyl or equal and shall be guaranteed not to crack or yellow for six years. Groovers should have clear edged that hold fabric in place. Certificate of flame resistancy must be provided.

12. Options shall include:

- a. Headrail color: Anodized aluminum is the standard headrail color. Custom

painted colors are available at an additional charge.

## PART III EXECUTION

### 3.01 INSPECTION

- A. Window treatment subcontractor shall be responsible for inspection of site, field measurements, and approval of mounting surfaces and installation conditions.
- B. Subcontractor shall verify that site is free of conditions that interfere with blind installation and operation, and shall begin installation only when any unsatisfactory conditions have been rectified.

### 3.02 INSTALLATION

- A. Installation shall comply with LouverDrape specifications, standards, and procedures.
- B. Provide support brackets as per LouverDrape's installation instructions.
- C. See installation instructions packaged with blinds for more installation details.
- D. Provide adequate clearance to permit unencumbered operation of blind and hardware.
- E. Demonstrate blinds to be in uniform and smooth working order.

### 3.03 CLEANING

- A. Vacuum fabric vanes lightly with brush attachment on a regular basis. Stains may be spot cleaned by sponging gently with mild detergent or fabric cleaner. Ensure proper drying following cleaning by providing adequate ventilation.
- B. Clean soiled aluminum and PVC vanes by wiping clean with only a mild liquid detergent soap solution and water. Window cleaner or cloths with paper content should not be used on aluminum vanes. Do not use abrasive cleansers. Ensure proper drying following cleaning by providing adequate ventilation.



Levolor Home Fashions  
Contract Division

4110 Premier Drive  
High Point, NC 27265  
1-800-221-6803

Contract Customer Service  
1-800-826-8021

©Copyright 1996, Levolor Home Fashions.  
All rights reserved. US and non-US patents  
and patents pending. Product specifications  
are subject to change without notice.  
Printed in the USA.