

For electricians and roller shutter and awning installers

Installation Instructions for Tubular Motors Type 9

120 V / 60 Hz

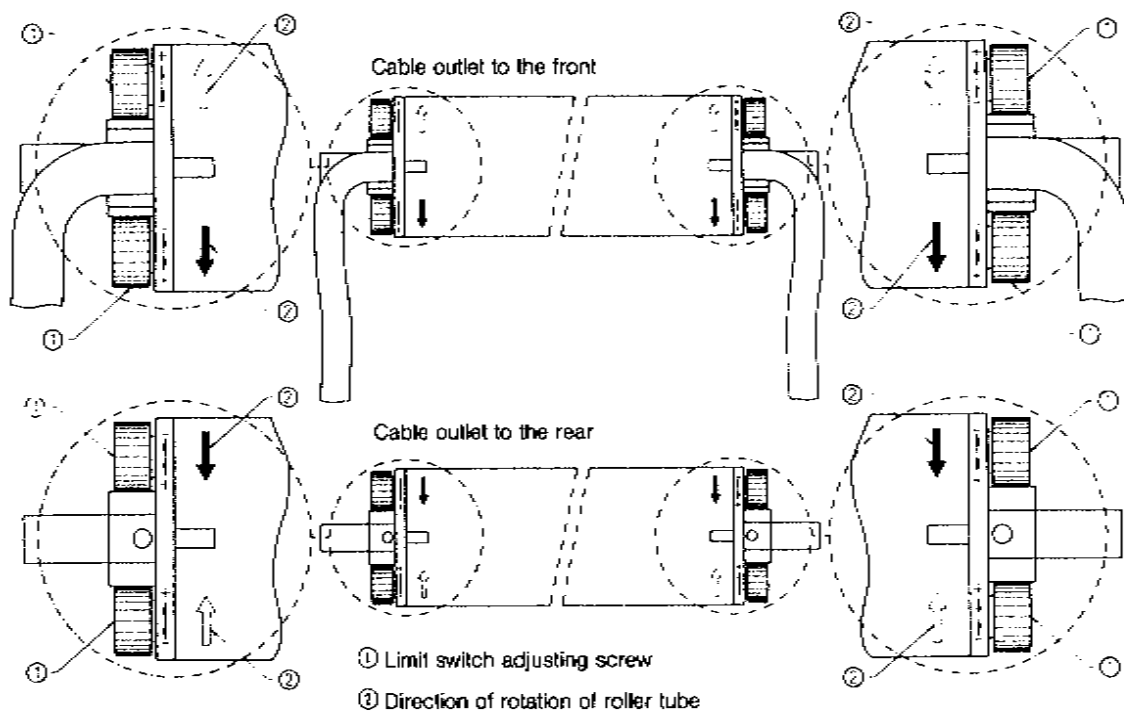


After the tubular motor
has been installed,
attach these installation
instructions to the
cable for the use of the
electrician.

US-13.805.1601-0295



For Motors Type 9 with Knurled Screws



Identify the limit switch adjusting screws from the direction of travel arrows. Turn the limit switch adjusting screws to:

minus (-) = Shorter travel

plus (+) = Longer travel

Note: The limit switches function only when the motor is installed in the roller shutter tube.

Extended Limit Switch Range

If more than 16 (on Type 9/...k 11) revolutions of the tube are necessary, the motor must be switched on in „down“ direction until the motor cuts out before attaching the roller shutter. Hold the „down“ momentary contact switch depressed and turn limit switch adjusting screw „down“ in ‘-’ (minus) direction until the motor has made approx. 8 (on Type 9/...k 5.5) revolutions of the tube.

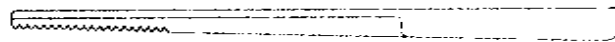
Checking the End Positions

Allow the motor to run alternately in both directions until the limit switches trip. Carry out a fine adjustment of the limit switch settings, if necessary.

One turn of the adjusting screw corresponds to an approx. 150° turn of the roller tube. The motor has a running time of approx. 6 minutes before the winding thermostat cuts out. Allow the motor to cool down for at least 15 minutes before trying to switch on again.

Adjusting Tool

Gear rack



Limit Switch Adjustment

The limit switches are set at the factory to 8 revolutions of the tube. The maximum limit switch range for Type 9/... tubular motors is 24 (for Type 9/...k 15) revolutions. If more than 16 (on Type 9/...k 11) revolutions of the tube are necessary, proceed as described under „Extended limit switch range“.

Adjustment of the „Up“ Direction

Allow the motor to run completely in the „down“ direction, attach the roller shutter to the tube and run the motor in the „up“ direction. At the same time, turn limit switch adjusting screw „up“ in '-' (minus) direction until the motor stops. Then hold the momentary contact switch on the „up“ assembly cable depressed and turn limit switch adjusting screw „up“ in '+' (plus) direction until the desired end position is reached. If the end position is not reached, lower the roller shutter again and repeat the procedure as described above.

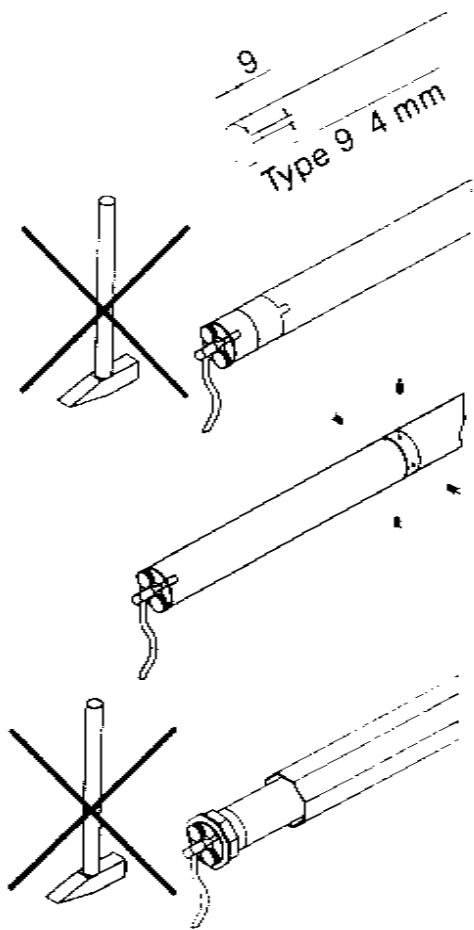
Adjustment of the „Down“ Direction

Switch on the motor in the „down“ direction and turn limit switch adjusting screw „down“ in '-' (minus) direction until the motor stops. Then hold the momentary contact switch on the „down“ assembly cable depressed and turn limit switch adjusting screw „down“ in '+' (plus) direction until the desired end position is reached.

Installation Instructions

Installation in Round Tubes

- On round tubes, cut a slot in the end of the tube on the drive side!
- Push in the motor (do not knock in, e.g. with a hammer!) so that the drive lug engages in the slot.
- Screw on or rivet into the coupling (adapter)!
- Continue on next page.



Installation in Profile Tubes

- Push motor with matching drive adaptor and crown into the profile tube (do not knock in, e.g. with a hammer!).
- Continue on next page.