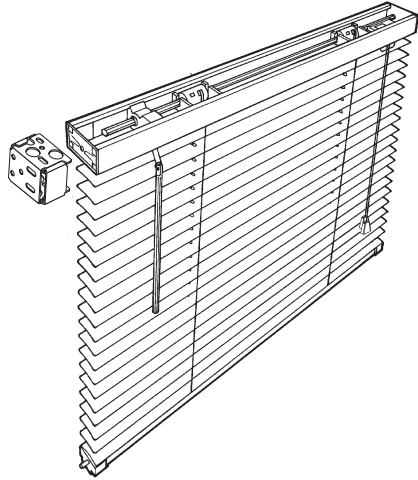


DATA SHEET

BALI® CLASSICS™ ALUMINUM BLINDS

Product Features



- 1" x 1½" steel headrail
- Anti-static performance to repel dust
- Low HAP, low VOC paint process
- Disengaging clutch
- Crash-proof cord lock
- Enclosed bottomrail
- .006" or .008" slat option
- Perforated slat option
- Specialty shapes option
- GREENGUARD Gold Certified
- Limited Lifetime Warranty



Product Specifications

Headrail shall be 1" high x 1½" wide x .025" thick U-shaped steel. The steel finishing process includes phosphate treatment for corrosion resistance, a chrome-free sealer, a low HAP urethane primer, and a topcoat of low HAP polyester-baked enamel.

Tilter shall be made of injection-molded thermoplastics for smooth, low-friction operation and will incorporate a clutch mechanism to prevent damage due to over-tilting.

Tilt rod shall be electro-zinc coated solid steel measuring ¼" square.

Tilt wand shall be clear polycarbonate with a hexagonal cross section measuring approximately ¼" diameter, attached to the tilter shaft with a spring clip for easy removal.

Cord lock is a snap-in design made of durable, high impact nylon with a stainless steel wear guard incorporating a floating, shaft-type locking pin. The design provides a crash-proof safety feature that will lock the blinds automatically upon release of the lift cord.

Drum and cradles shall be low-friction thermoplastic and provided for each ladder.

Installation brackets shall be made of phosphate-treated steel with a urethane primer and polyester-baked enamel finish to match headrail. The design shall incorporate a hinged front cover.

Braided ladder shall be made of 100% polyester yarn, incorporating two extra strength rungs per ladder for slat support. Standard ladder spacing shall be 21.5mm.

Slats shall be 5000 Series cold-rolled aluminum containing the maximum allowable recycled content to produce a high strength and corrosion-resistant, flexible product. Slats shall be nominally 1" wide x .006" thick and processed to provide a smooth, hard, less porous surface with anti-static performance to repel dust. Slats shall be treated with a topcoat of polyester-baked enamel.

Bottomrail shall be completely enclosed tubular shape made of phosphate-treated steel for corrosion resistance and finished with a chrome-free sealer, low HAP urethane primer, and a topcoat of low HAP, polyester-baked enamel and shall measure .025" thick.

Options:

- .008" thick slat
- 20mm ladder spacing
- 22.5mm ladder spacing
- Perforated slat
- Tilt limiter
- Cord tilt
- Ring tilt
- Top-lock cord lock
- Ring pull
- 2-piece pocket bracket
- Turn clips for extruded pocket
- Extension brackets
- Hold-down brackets
- Cut-outs
- 2-slat valance
- Deluxe 2-slat valance
- Specialty shapes (arches, circles, and angles)

Bali® Classics™ Aluminum Blinds**PART 1 – GENERAL****1.01 DESCRIPTION**

- A.** Furnish and install Bali® Horizontal Blinds, provided by Springs Window Fashions LLC, 7549 Graber Road, Middleton, WI 53562 in accordance with specifications, drawings and contract documents.

1.02 SUBMITTALS

- A.** Manufacturer's complete CSI 3-part specification sheet.
- B.** Product Sample: Submit working hand sample or mock up blind as required.
- C.** Color Sample: Submit two 6" samples of slat material indicating color and dimensions.

1.03 DELIVERY, STORAGE AND HANDLING

- A.** Product to be delivered to jobsite in manufacturer's original packaging.
- B.** Products to be handled and stored to prevent damage to materials, finishes and operating mechanisms. Store in a clean, dry area, laid flat to prevent sagging and twisting of packaging.

1.04 PROJECT / SITE CONDITIONS

- A.** Building shall be enclosed; and windows, frames and sills shall be installed and glazed.
- B.** Wet work shall be complete and dry.
- C.** Ceilings, window pockets, electrical and mechanical work above window covering shall be complete.
- D.** Electrical power (110 volt AC) shall be available for installer's tools within 500 feet of product installation areas.

1.05 QUALITY ASSURANCE

- A.** Manufacturer, subsidiary or licensed agent shall be approved to supply the products specified, and to honor any claims against product presented in accordance with warranty.
- B.** Installer or agent shall be qualified to install specified products by prior experience, demonstrated performance and acceptance of requirements of manufacturer, subsidiary, or licensed agent. Installer shall be responsible for an acceptable installation.

1.06 LIMITED LIFETIME WARRANTY

- A.** Springs Window Fashions LLC (SWF) warrants the product against original defects in materials or workmanship for the life of the blind. SWF does not warrant damage due to accidents, misuse, abuse, improper installation, alterations or improper cleaning.

PART 2 – PRODUCTS**2.01 ACCEPTABLE MANUFACTURERS**

- A.** Springs Window Fashions LLC or architect approved equal.
- B.** Substitutions Request: Submit for approval under provisions of section 01600.

2.02 HORIZONTAL BLINDS**A. Product: Bali® Classics™ Aluminum Blinds**

- a. Headrail** shall be 1" high x 1-1/2" wide x .025" thick U-shaped steel. The steel finishing process includes phosphate treatment for corrosion resistance, a chrome-free sealer, a low HAP urethane primer and a topcoat of low HAP polyester baked enamel.
- b. Tilter** shall be made of injection-molded thermoplastics for smooth low-friction operation and will incorporate a clutch mechanism to prevent damage due to over tilting.
- c. Tilt rod** shall be electro-zinc coated solid steel measuring 1/4" square.
- d. Tilt wand** shall be clear polycarbonate with a hexagonal cross section measuring approximately 1/4" diameter and attached to the tilter shaft by means of a spring clip for easy removal.
- e. Cord lock** shall be a snap in design made of durable high impact nylon with a stainless steel wear guard incorporating a floating shaft locking pin. The design provides a crash-proof safety feature that will lock blinds automatically upon release of cord.
- f. Drum and cradles** shall be low-friction thermoplastic and provided for each ladder.
- g. Installation brackets** shall be a rivet-hinged front cover phosphate-treated steel with urethane primer and polyester baked enamel finish to match headrail.
- h. Braided ladder** shall be made of 100% polyester yarn incorporating two extra strength rungs per ladder for slat support. Standard ladder spacing shall be 21.5mm.

Bali® Classics™ Aluminum Blinds

- i. **Slats** shall be 5000 series cold-rolled aluminum containing the maximum allowable recycled content to produce a high strength and corrosion resistant flexible product. Slats shall be nominally 1" wide x .006" thick and processed to provide a smooth, hard, less porous surface with anti-static performance to repel dust. Slats shall be treated with a topcoat of low HAP polyester baked enamel.
- j. **Bottomrail** shall be completely enclosed tubular shape made of phosphate-treated steel for corrosion resistance and finished with a chrome-free sealer, low HAP urethane primer and a topcoat of low HAP polyester baked enamel and shall measure .025" thick.
- k. **Options** shall include:
 - i. .008 thick slat
 - ii. Tilt limiter
 - iii. Cord tilt
 - iv. Ring tilter
 - v. Top lock cord lock
 - vi. Ring pull
 - vii. 2 piece pocket bracket
 - viii. Turn clips for extruded pocket
 - ix. Extension brackets
 - x. Hold down brackets
 - xi. Cut outs
 - xii. 2 slat valance
 - xiii. Deluxe 2 slat valance
 - xiv. 20mm ladder spacing
 - xv. 22.5mm ladder spacing
 - xvi. Perforated slat

2.03 FABRICATION

- A. Blinds shall be fabricated according to specifications and accurate to tolerance established by SWF engineering standards.

PART 3 – EXECUTION**3.01 INSPECTION**

- A. Installer shall be responsible for inspection of jobsite, approval of mounting surfaces, verification of field measurements and installation conditions. Installation shall commence when satisfactory conditions are met.

3.02 INSTALLATION

- A. Install blinds in accordance with manufacturer's instructions including recommended support brackets and fasteners.
- B. Install blinds with adequate clearance to permit smooth operation of the blinds. Demonstrate blinds to be in smooth, uniform working order.

3.03 MAINTENANCE AND CLEANING

- A. Clean blinds with mild soap and water only. Do not use cleaning methods involving heat, bleach, abrasives, or solvents. Do not use window cloths with paper content. Use of these methods will void the warranty.

ALUMINUM HORIZONTAL BLIND COLOR CARD

COLOR	S3000	CLASSICS	CUSTOMISER®	MICRO	2" HERITAGE™	2" SCHOOL
005 White Gloss	X	X	X	X	X	X
006 Raw Umber	X	X	X	X	X	
011 Beige*	X	X	X	X		
026 Smoky Gray	X	X	X	X		
031 Fawn*	X	X	X	X		
033 Pitch Black	X	X	X	X		
034 Aluminum*	X	X	X	X		
042 Matte White	X	X	X	X		
044 Granite	X	X	X			
057 Midnight Blue	X	X				
060 Milk Chocolate*	X	X	X	X		
062 Char Brown*	X	X	X	X	X	X
062P Char Brown Perforated	X	X	X			
065 Almost White Gloss*	X	X	X	X	X	
085 Real Red*	X	X	X			
087 Forest Shadow	X	X	X			
089 True Blue*	X	X	X			
095 U.N. Gray	X	X	X			
100 Vanilla*	X	X	X	X		
103 Tender Taupe	X	X				
112 Alabaster*	X	X	X	X	X	X
112P Alabaster Perforated	X	X	X			
121 Brushed Aluminum*	X	X	X	X	X	X
121P Brushed Aluminum Perforated	X	X	X			
122 Greige	X	X	X	X	X	
126 Ash Metallic	X	X	X		X	
154 Hunter Green*	X	X			X	
168 Dark Bronze	X	X	X		X	
170 Silver Mist	X	X	X			
175 Weathered Taupe	X	X	X			
181 Natural Stone	X	X	X			
205 White Satin	X	X	X	X	X	X
205P White Satin Perforated	X	X	X			
233 Black Satin*	X	X	X	X	X	
233P Black Satin Perforated	X	X	X			
326 Alabaster Pearl*	X	X	X	X	X	
327 Fawn Pearl*	X	X	X	X		
328 Beige Pearl*	X	X				
375 Birch White	X	X				
376 Navajo White	X	X	X			
386 Snowcap White*	X	X	X		X	X
399 Rock Gray	X	X				
405 Gray Dawn	X	X				
535 Parchment	X	X	X	X		
541 Flax*	X	X	X	X		
544 True White*	X	X	X	X	X	
607 Cameo*	X	X	X	X		
624 Buff	X	X	X			
625 Desert Sand*	X	X	X			
629 Crystal White*	X	X	X	X		
630 Coconut*	X	X	X			
637 White Pearl*	X	X		X		
648 Magnet	X	X				
653 Burgundy*	X	X	X		X	
670 Creamy Beige	X	X	X	X	X	X
680 Skyline	X	X				
724 Almond	X	X			X	X
737 Silver	X	X	X			
741 Polished Aluminum*	X	X	X		X	X
771 Mercury	X	X				
778 Ice	X	X	X			
904 Lamplight*	X	X	X	X	X	X
963 Stucco	X	X	X		X	
983 Gray Haze	X	X	X	X	X	X

*Available in cordless S3000



544 TRUE WHITE* 637 WHITE PEARL* 005 WHITE GLOSS 205 WHITE SATIN 375 BIRCH WHITE 386 SNOWCAP WHITE*



629 CRYSTAL WHITE* 065 ALMOST WHITE GLOSS* 042 MATTE WHITE 376 NAVAJO WHITE 535 PARCHMENT 724 ALMOND



112 ALABASTER* 326 ALABASTER PEARL* 541 FLAX* 100 VANILLA* 904 LAMPLIGHT* 031 FAWN*



630 COCONUT* 963 STUCCO 607 CAMEO* 670 CREAMY BEIGE 181 NATURAL STONE 624 BUFF



327 FAWN PEARL* 625 DESERT SAND* 011 BEIGE* 328 BEIGE PEARL* 103 TENDER TAUPE 060 MILK CHOCOLATE*



085 REAL RED* 653 BURGUNDY* 062 CHAR BROWN*



778 ICE 089 TRUE BLUE* 057 MIDNIGHT BLUE



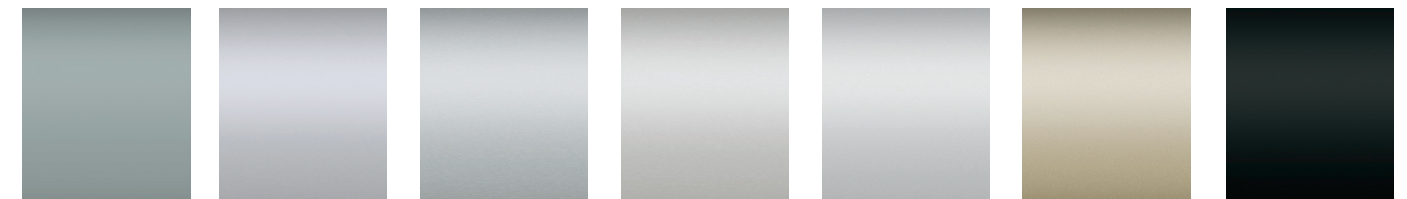
087 FOREST SHADOW 154 HUNTER GREEN*



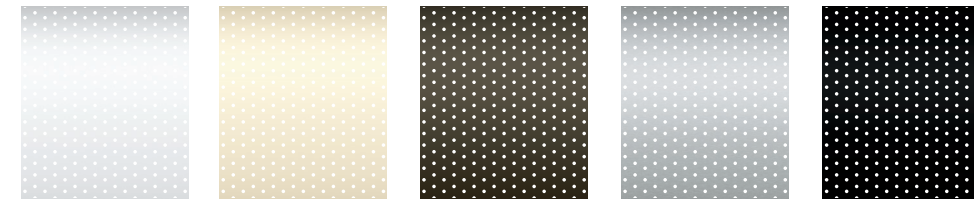
983 GRAY HAZE 026 SMOKY GRAY 648 MAGNET 405 GRAY DAWN 122 GREIGE 175 WEATHERED TAUPE 044 GRANITE



006 RAW UMBER 399 ROCK GRAY 771 MERCURY 680 SKYLINE 095 U.N. GRAY 233 BLACK SATIN* 033 PITCH BLACK



170 SILVER MIST 741 POLISHED ALUMINUM* 121 BRUSHED ALUMINUM* 034 ALUMINUM* 737 SILVER 126 ASH METALLIC 168 DARK BRONZE

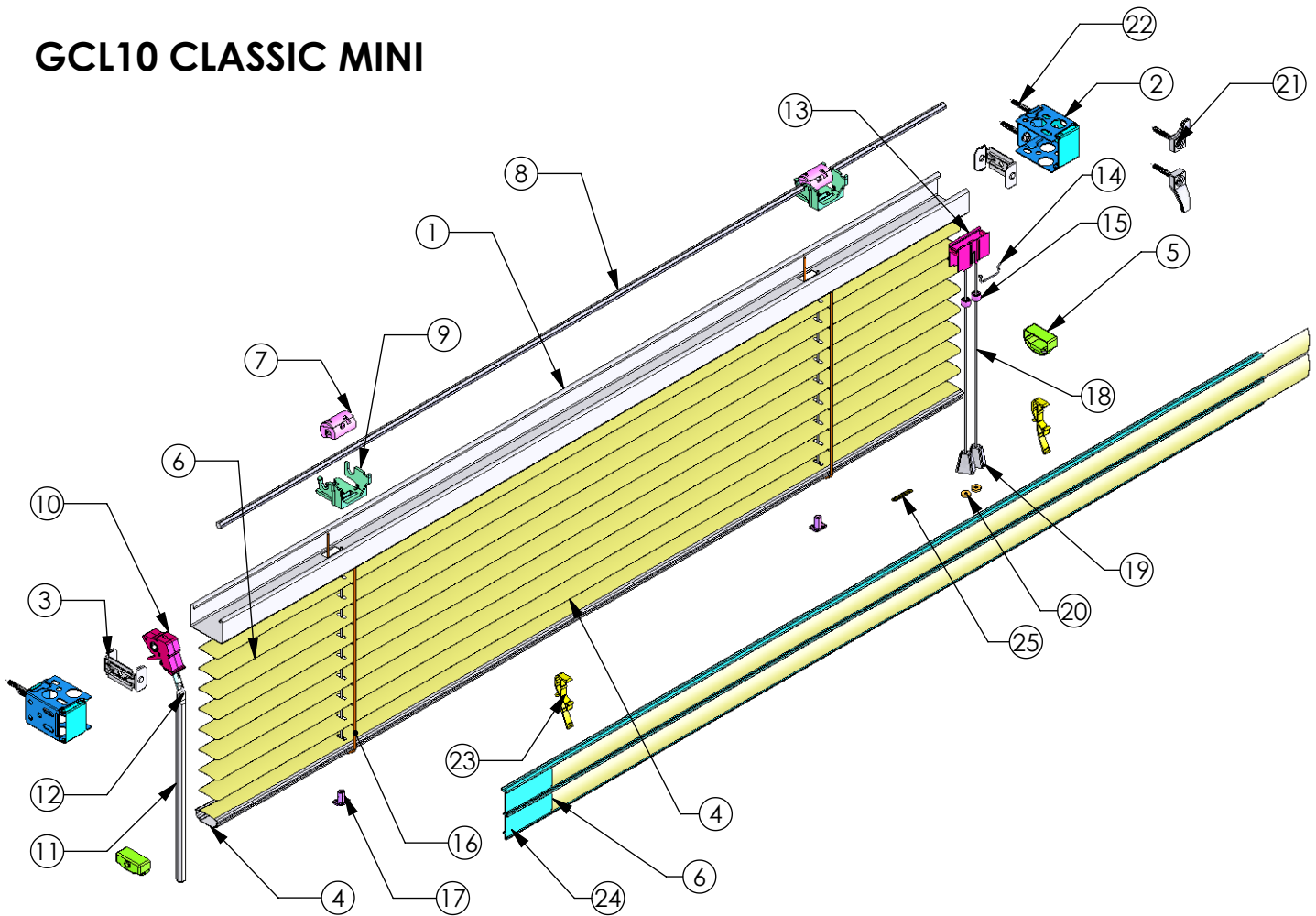


205P WHITE SATIN 112P ALABASTER 062P CHAR BROWN 121P BRUSHED ALUMINUM 233P BLACK SATIN

Perforated slats available on S3000, Classics, and Customiser®
 *Available in cordless S3000
 Actual color may vary from card.



GCL10 CLASSIC MINI

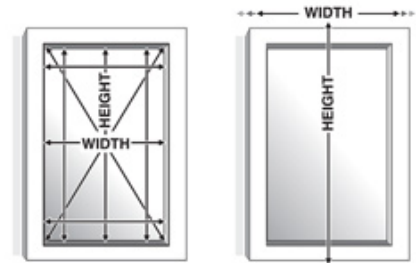


ITEM NO.	PART NUMBER	DESCRIPTION	ITEM NO.	PART NUMBER	DESCRIPTION
1	70-000-XXX	1 X 1.5 CHANNEL	13	70-009-000	CORD LOCK HOUSING
2	70-011-000	1X1.5 CLASSIC BRACKET	14	70-083-000	CORD SEPARATOR
3	70-015-000	END STIFFENER, 1 x 1.5	15	70-808-XXX	CORD STOP BEAD
4	70-020-XXX	CLASSICS BOTTOMRAIL	16	70-040-XXX	LADDER, 1"
5	70-036-XXX	SUP BTMRL END CAP	17	70-809-000	HZ TAPE/CORD BUTTON
6	04450-XXX	1" COIL SLAT	18	70-044-XXX	LIFT CORD, 1.4MM
7	70-013-094	TAPE DRUM - 1" HORIZONTAL	19	70-046-XXX	TASSEL
8	70-001-000	TILT ROD - HEXAGONAL	20	02470-17	CARRIAGE WHEEL
9	70-012-000	TILT ROD SPRT	21	75-0600-00	CLEAR CORD CLEAT
10	70-008-000	WAND TILTER	22	04038-03	#6 X 1-1/4" HEX HEAD SCREW
11	70-910-000	Plastic Wand Tilter Stock - Mini Blind	23	70387-17	VALANCE CLIP
12	70-080-000	SPRING CLIP	24	70-098-000	12' DELUXE VALANCE
			25	95-0210-00	GRABER LABEL

Measuring Instructions

Guidelines For A Perfect Fit

- Measure each window individually, as size variances are common.
- Record width first, then height (also referred to as length) to the nearest 1/8".
- Measure width from left to right, height from top to bottom, using a steel tape measure. **Do not use a cloth tape.**



Horizontal Blinds and Shades

Cellular Shades, Pleated Shades, Natural Shades, Roman Shades, Roller Shades, Solar Shades, Wood Blinds, Faux Wood Blinds and Horizontal Blinds

Inside Mount

Inside mount blinds and shades are installed inside the window casing. Minimum depth requirements vary by product and headrail type, or by tube size for Solar Shades. See your designer or sales associate for complete details.

1. Measure the exact inside width of window casing from one inside edge to the other in three different places. Record the narrowest measurement.
2. Measure the exact height in three different places from top edge of opening to top of sill. Record the longest measurement. Solar Shades should be measured at the top only.
3. Do not take any deductions for clearance. The factory will take necessary deductions for a perfect fit.
4. Measure the window diagonally in two places, as shown. If the diagonal dimensions are not equal, we recommend an outside mount application for optimal function and aesthetics.

Additional Information for Measuring Solar Shades and Roller Shades

1. On Continuous Loop inside mounts, there is up to 3/4" light gap per side. On Cordless inside mounts, there is approximately 1" of light gap on the right and just over 1/2" on the left.
2. For optimal light and glare control, outside mount is recommended, or you may add a secondary soft window treatment (drapery or curtain) to hide the light gap on an inside mount.
3. Fabric width is 1 1/8"-1 3/8" narrower than finished shade width of the tube and its components on Continuous Loop shades.
4. Fabric width is 1"-1 1/4" narrower than finished shade width of the tube and components (without valance or side covers) on Cordless shade.

Outside Mount

Outside mount blinds and shades are installed outside the window casing, covering an area larger than the window itself.

1. Measure the exact width to be covered. Be sure the measurement overlaps the window opening by at least 1 1/2" on each side (3" total overlap) to ensure light control and privacy.
 - For Solar Shades make sure the measurement overlaps the window opening by at least 3" on each side (6" total overlap) to ensure light control and privacy.
 - See your designer or sales associate for complete details.
2. Measure exact height to be covered, including desired overlap (typically from top edge of molding to bottom edge, or to top of sill if there is one).
3. The factory makes NO allowances on outside mount.

How To Install Inside Mount

Aluminum Blinds w/Box Brackets

CÓMO INSTALAR las Persianas de Aluminio de Montaje Interior con Soportes de Caja

COMMENT INSTALLER en pose intérieure des stores en aluminium avec supports de manchon.

Thank you for purchasing this fine window treatment proudly constructed by us. Your blind has been custom made to your personal specifications with the highest standards of quality and craftsmanship. We have confidence that it will provide you with many years of beauty and easy maintenance. Enjoy!

Follow the easy 'step by step' instructions to install your blind. Should you need additional support, please feel free to call our Customer Service Center at 1-800-221-6352 or e-mail us at windowfashions@springs.com. We will be glad to help you.



Again, we appreciate that you have chosen us to enhance the design and look of your home.

Gracias por comprar este fino producto de ventana que hemos fabricado con orgullo. Su persiana ha sido fabricada de acuerdo a las especificaciones personales del cliente con los más altos estándares de artesanía y de calidad. Nosotros tenemos la confianza que nuestro producto le brindará muchos años de belleza y fácil mantenimiento. Le deseamos que la disfrute.

Siga las instrucciones "paso a paso" para instalar su persiana. Si necesitara soporte adicional haga el favor de llamar a nuestro Centro de Servicio al Cliente al teléfono 1-800-221-6352 o envíenos un correo electrónico a windowfashions@springs.com. Estaremos encantados de ayudarle.

Nuevamente le agradecemos que nos haya escogido para mejorar el diseño y la apariencia de su hogar.

Merci d'avoir acheter ce superbe traitement pour fenêtre que nous sommes fiers d'avoir exécuté pour vous. Votre store a été fait sur mesure selon votre propre cahier des charges dans un souci d'excellence et de la plus haute technicité. Nous ne doutons pas qu'il vous offrira des années de beauté et d'entretien facile. Profitez-en bien!

Pour installer votre store, veuillez suivre les instructions détaillées. Si vous avez des questions, n'hésitez pas à prendre contact avec notre Centre de service après-vente en téléphonant au 1-800-221-6352 ou par courrier électronique au: windowfashions@springs.com. Nous vous aiderons avec plaisir.

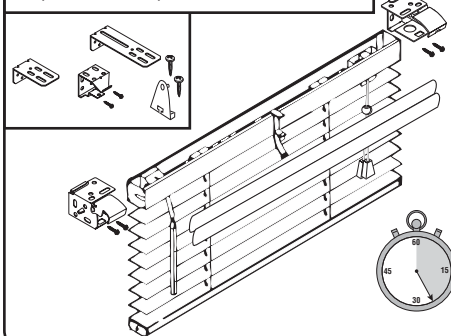
Encore une fois, nous vous remercions de nous avoir choisi pour améliorer et embellir votre intérieur.

1

Everything needed to install your blind

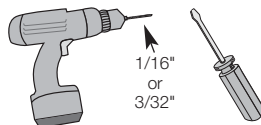
Todo lo necesario para instalar la persiana
Tout ce qu'il faut pour la pose du store

Optional • Opcional • Facultatif



Not all blinds supplied with valance
No todas las persianas vienen con la faja decorativa
Certains stores sont livrés sans cantonnière

Tools Needed
Herramientas necesarias
Outillage nécessaire

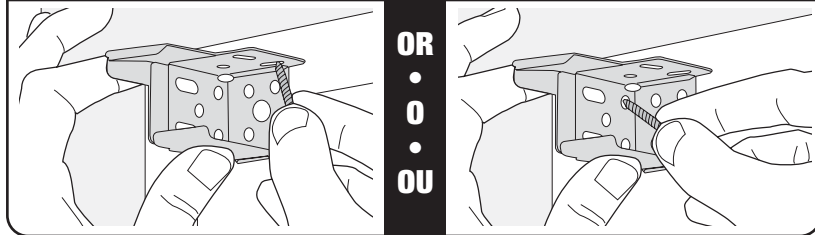


1/16"
or
3/32"

2

Mark bracket location

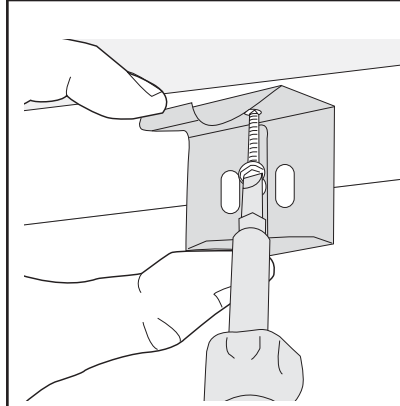
Marque el lugar de la ménsula
Marquez la position du support



2

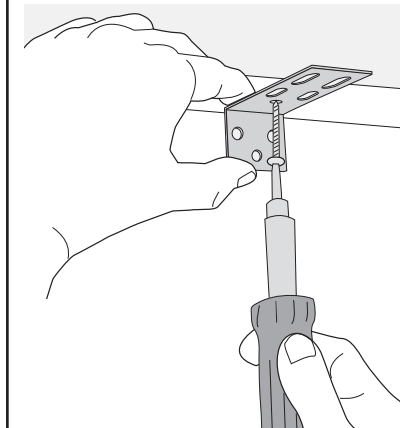
Optional center support(s)/projection brackets

Opcional soporte central/soportes de extensión
Facultatif supports du centre/supports de projection



Position the center support(s) in line with the mounting brackets so they will not interfere with the ladder tapes. Space evenly and keep out of the way of other working parts.

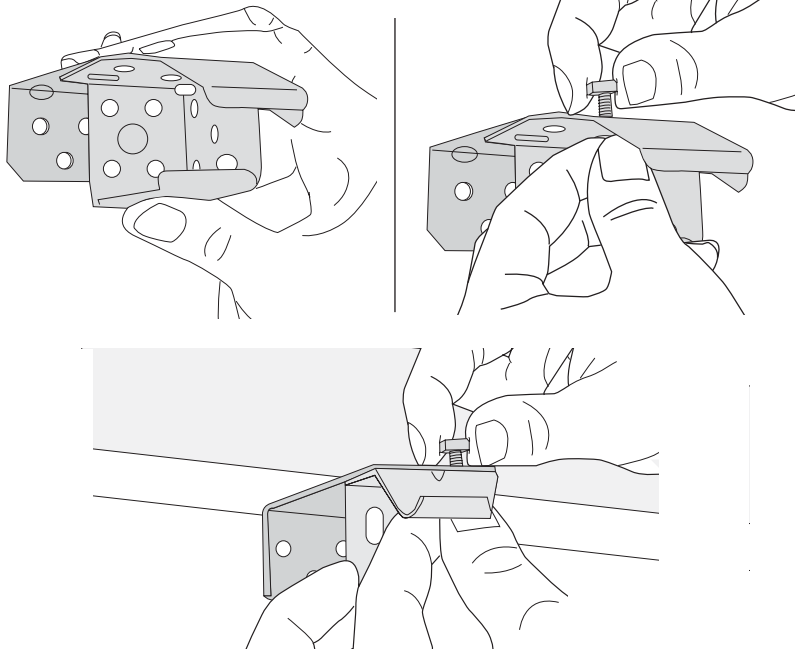
Ponga el soporte central en línea con las ménsulas de instalación de modo que no interfieran con las cintas de escalerillas. Ponga a espacios iguales y alejado de las piezas operacionales.



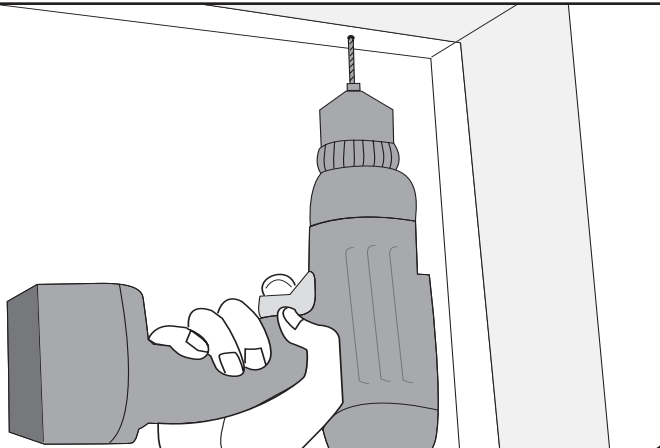
Placer les supports du centre dans le prolongement des supports de montage de manière à ne pas gêner l'échelle de support des lamelles. Placez-les à intervalles réguliers et hors de contact avec toute pièce mobile.

2**Optional center support(s)/projection brackets**

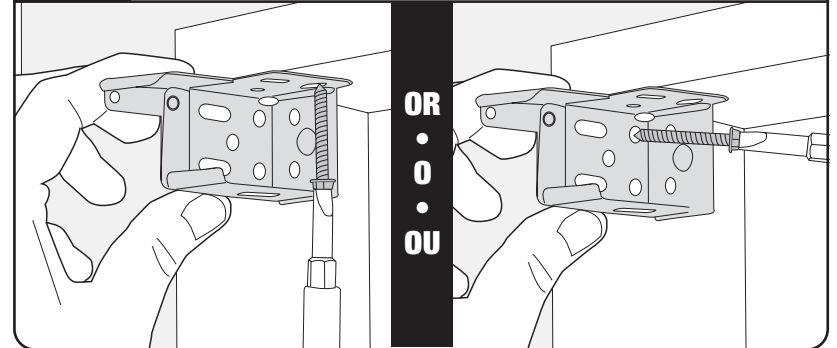
Opcional soporte central/soportes de extensión
 Facultatif supports du centre/supports de projection

**3****Drill holes**

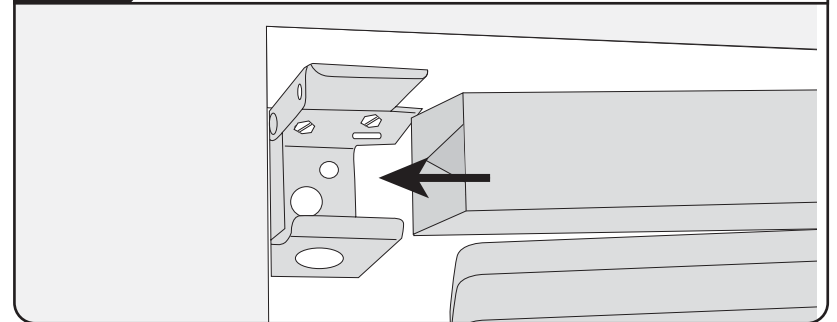
Perfore agujeros
 Percez des trous

**4****Screw in brackets**

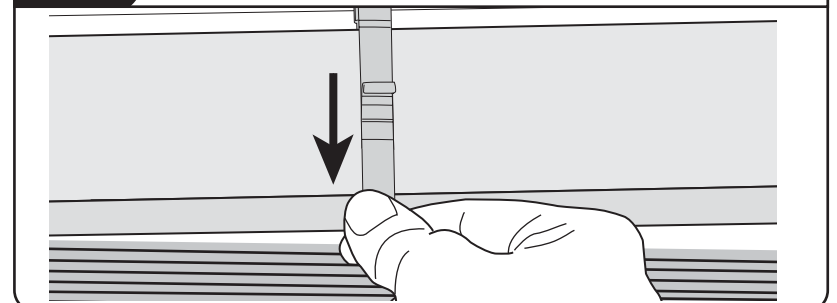
Atornille las ménsulas
 Vissez les supports

**5****Mount blind in brackets**

Instale la persiana en las ménsulas
 Fixez le store dans les supports

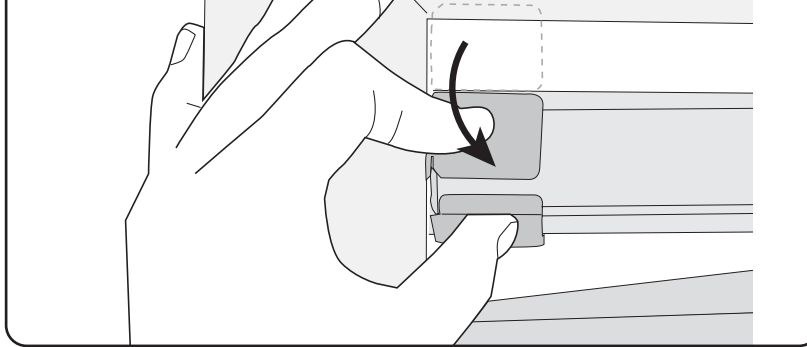
**6****Attach valance clip**

Ponga el sujetador de cenefa
 Fixez l'attache de cantonnière

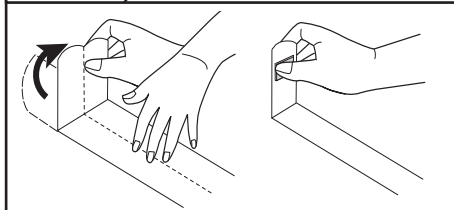


7**Close door on brackets**

Cierre la puerta en las ménsulas
 Fermez la porte des supports

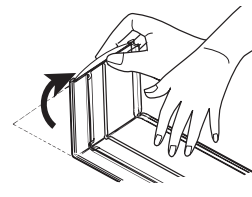
**7****Optional valance with returns**

Opcional faja decorativa con retornos
 Facultatif cantonnière avec retours



2 slat valance
 Fajilla decorativa doble
 Cantonnière à 2 lattes

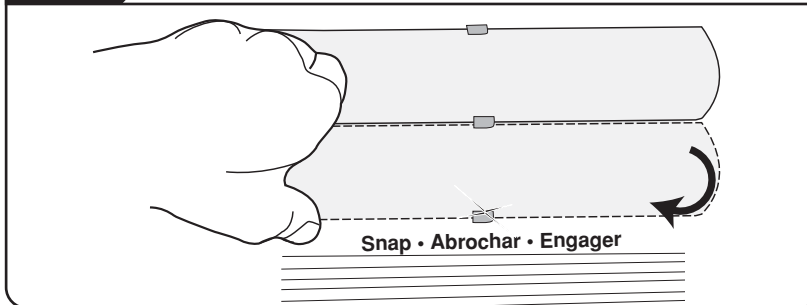
1" wide slat
 Fajilla de 1" de ancho
 Latte de 2,54cm

OR**•**

Deluxe channel valance
 Faja decorativa acanalada de lujo
 Cantonnière profilée de luxe

8**Attach valance**

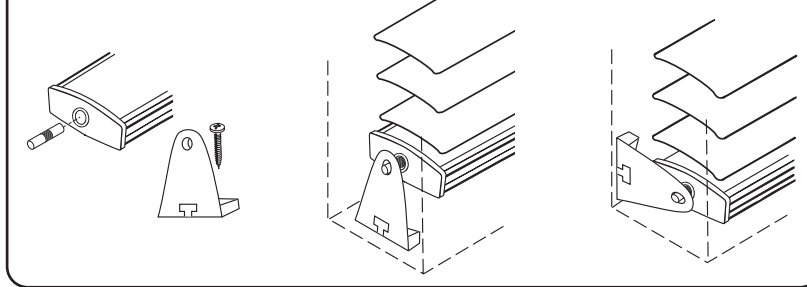
Ponga la cenefa
 Fixez la cantonnière



Snap • Abrochar • Engager

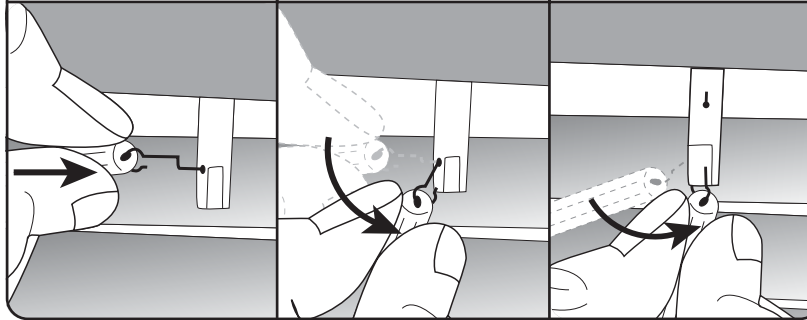
8**Optional hold-down brackets**

Opcional soportes sostenedores
 Facultatif supports de retenue

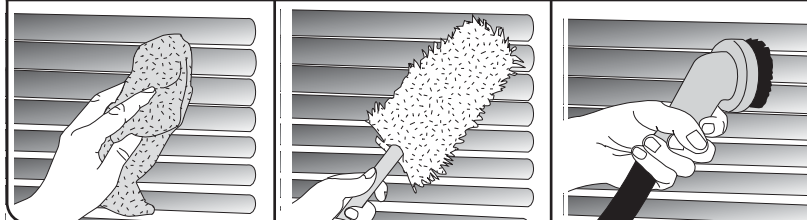
**Additional Instructions**

Instrucciones adicionales
 Instructions supplémentaires

Attach Tilt Wand • Accesorio para girar la vara •
 Fixation de la baguette d'inclinaison

1**2****3****Use warm water and mild non-abrasive liquid soap**

Use agua caliente y jabón líquido suave no raspante
 Utilisez de l'eau tiède et un savon doux liquide non abrasif



Cleaning Instructions

Cleaning Instructions	Faux Wood	Horizontal	Natural	Soft Vertical	Solar	Vertical	Wood
See Special Cleaning Instructions Below		X		X		X	X
Dusting	X	X	X	X	X	X	X
Vacuuming	X	X	X	X	X	X	X
Soil Removal & Spot Cleaning	X	X		X	X	X	
Water Immersible				X		X*	

*Vinyl vertical vanes only. Fabric vanes may not be immersed in water.

Recommended Cleaning Methods:

- **Dusting:** To maintain a like-new appearance, regular light dusting with a feather duster.
- **Vacuuming:** For deeper cleaning, lightly vacuum with the upholstery attachment of any vacuum cleaner.
- **Soil Removal & Spot Cleaning:** Spot clean with a soft cloth or sponge, a mild detergent and warm water. Blot gently and allow to dry completely. Be careful not to crush or wrinkle fabric shades.
- **Water Immersible:** Able to be immersed in water.

Warning: Do not use strong detergents or spot removers. Dry cleaning and ultrasonic cleaning is not recommended.

Special Cleaning Instructions:

- **Wood Blinds:**
 - **Painted Finish:** Clean with a soft, damp cloth.
 - **Stained Finish:** Treat with a lemon oil or other wood preservative.
- **Vertical Blinds:**
 - **Vinyl Vertical Blinds (Vanes Only):** Vanes may be removed and immersed in water. If a thin film of mild detergent is left on the vanes, it will eliminate static electricity.
 - **Soft Vertical Blinds:** Soft vertical fabrics are steam pressed in the manufacturing process, but may need to be re-steamed or ironed at a low temperature before hanging. Do not steam or iron fabric while it is on the vanes as they will be damaged. Do not put fabric in the dryer.
Machine Washable Fabric! It's easy to wash the fabric - and there's no need to take down the entire blind to do so!
 - Unsnap the fabric from the vanes and place in wash.
 - Use the gentle cycle, warm water and Woolite® Fine Fabric Wash or other mild laundry detergent - do not use chlorine bleach.
 - Line dry fabric - do not put fabric in dryer!
 - If necessary, steam or iron at a low temperature before putting fabric back on vane.
 - Snap fabric back onto the vinyl vanes.

Bali® Aluminum Blinds Green Info Sheet

Green Properties of Bali Aluminum Blinds

- Aluminum blinds prevent solar heat gain in the summer and reduce heat loss in the winter by creating an insulating buffer between the interior and exterior. This insulating effect reduces energy consumption and lowers energy costs.
- By blocking UV rays, aluminum blinds prevent damage to furniture, fabrics and interior finishes protecting the durability of these items and reducing the need to send damaged products to a landfill prematurely.
- Bali aluminum blinds carry a limited lifetime warranty and are designed, engineered and tested to ensure a long life, reducing landfill waste created by short-lived products.

Eco-Friendly Raw Materials

- Aluminum slats are 100% recyclable. The steel headrail and plastic components are 100% recyclable as well.
- All packaging materials are 100% recyclable. The corrugated cardboard contains 35-40% recycled content. The angle board used to reinforce the cardboard is 100% recyclable and contains 80% post-consumer recycled material and 20% pre-consumer recycled material. Poly tubes, EPS pads, parts tub and bubble wrap used in packaging are also 100% recyclable.
- Custom box cutting machines are used to cut each box to the exact size of the blind. This process eliminates wasted cardboard, packing materials and shipping energy.



Green by Nature is Springs Window Fashion's commitment to the environment.

Bali is a brand of SPRINGS WINDOW FASHIONS the Best Experience Company



SWFcontract
33 West Third Street
Williamsport, PA 17701
Fax (800) 544-4749
Phone (570) 547-6162

Springs Window Fashions is proud to be affiliated with the following organizations that share our vision of sustainability and responsibility:



[Home](#) > [Customer Support](#) > Energy Efficiency

ENERGY EFFICIENCY

Window treatments, in conjunction with high-performance glazing systems, contribute to the reduction of energy consumption in commercial buildings by acting as a shading device for incoming solar radiation. Appropriate window coverings enhance the interior environment by optimizing daylight and controlling glare. SWF offers the specifier maximum design flexibility, color and style options, reliability and long-term value for the owner.

Solar, Thermal and Acoustical Test Information

Product			Solar Optical Properties				Thermal Transmittance Properties				Acoustical
Product	Material	Color	Position	Rs	As	Ts	Shading Coefficient		U-Value	R-Value	NRC
							Single Pane	Dbl. Pane			
Classics	Aluminum	064 Alum Texture	90° up	60.5	38.6	0.9	0.34	N/A	.74	1.35	.10
Micro	Aluminum	064 Alum Texture	90° up	68.0	32.0	0.0	0.28	N/A	.75	1.33	N/A
Vertical	PVC	White	90°	77.8	22.0	0.2	0.22	N/A	.80	1.25	N/A
	Fabric	Off White	90°	66.5	8.9	24.6	0.34	N/A	.83	1.20	N/A
	PVC Channel w/Fabric	Off White White Fabric	90°	74.4	22.5	0.1	0.24	N/A	.72	1.39	N/A
CrystalPleat® Cellular Shades	Fabric	Elegant Neutrals Sparkle	Lowered	55.0	38.0	7.0	0.31	0.25	.303*	3.20*	0.60
	Fabric	Cocoon™ Stonefield	Lowered	38.0	62.0	0.0	0.34	0.30	.339*	3.30*	0.45

U and R-Value results based on single pane 1/4" glass except those marked with asterisk (), which are based on double panes of 1/8" glass and double-cell fabric.



- [Home](#)
- [About Us](#)
- [Product Information](#)
- [Sweets.com](#)
- [AIA Education](#)
- [Contact Us](#)
- [Site Map](#)

Environmental and LEED Certification Information

As the construction industry continues to develop sustainable and green building standards on environmental objectives, Springs Window Fashions will continue to design and engineer products to meet these goals. Commercial window treatments manufactured by Springs Window Fashions contribute to "green movement" objectives in a number of ways and can help you obtain points for LEED certification.

Environmental Control

Shading Coefficient (SC) and Thermal Transmittance

Springs Window Fashions window treatments help reduce energy used in cooling and heating buildings. They accomplish this by improving the Shading Coefficient and reducing Thermal Transmittance.

Shading Coefficient (SC) is the most important criterion used in measuring the energy saving performance of a window treatment. The Shading Coefficient is the measure of solar heat gain when a shading device is used compared to solar heat gain through an unshaded window under the same conditions. The lower the SC, the better the shading ability or reduction of incoming solar radiation (heat) thus reducing the cooling cost.

Thermal Transmittance

Windows are high in thermal conductivity and can account for substantial heating losses. Cold weather night time heat losses can be especially severe. Springs Window Fashions commercial window treatment products reduce the thermal transmittance, helping to cut heating costs. Please see our guide [Energy Conservation Properties](#) of SWF commercial window treatments for details on the performance of our products in these areas.

Controlling Sunlight

Springs Window Fashions commercial window treatment products enhance the workspace environment by controlling glare and providing daylight. Our Bali perforated aluminum blinds especially excel in this area by reducing glare with the slats in the closed position, while still allowing an outdoor view through the slats. All of our commercial window treatments are designed for maximum flexibility in controlling sunlight while delivering dependable operations and clean and attractive aesthetics.

Recycled Materials

Springs Window Fashions focuses on using recycled materials wherever possible. For example, our metal horizontal blinds utilize approximately 42% post consumer recycled aluminum in our slats with additional post industrial recycled content added to each production run. For steel, the percentage of recycled materials is approximately 20%. Concerning the amount of aluminum and steel used in our Bali mini blinds on a percentage basis, on a 35" wide by 72" long blind, aluminum makes up approximately 40% and steel makes up approximately 60% of the weight.

Manufacturing Locations

Another area that should be noted in obtaining potential LEED points is using products manufactured within 500 miles of the construction site. Springs Window Fashions has manufacturing plants with shipping points of Montgomery, PA; McAllen, TX; San Diego, CA; Reno, NV and Middleton, WI. Please inquire as to which plants manufacture specific products for the 500 mile objective.



Springs Window Fashions consumer websites:

- www.GrabBlinds.com
- www.NanikBlinds.com
- www.BaliBlinds.com

[Home](#) > [Customer Support](#) > Life Safety

COMMERCIAL WINDOW TREATMENT LIFE SAFETY INFORMATION

Life Safety is a critical component in commercial product selection. Springs Window Fashions provides architects and contractors with a wide range of products that excel in this area, offering you a choice in aesthetics, functionality and sun and glare control.

Conservation & Recycling

Conservation is one of the core values of Springs Window Fashions. All wood blinds are crafted exclusively from North American hardwoods, carefully harvested through the practice of "sustained yield forest management." Sound forestry techniques, as well as the recycling of sawdust and wood shavings provides for a manufacturing process that puts the preservation of our natural resources first. Recycling raw materials, including aluminum, steel and PVC, is a key component of our daily business practice and the overall strategic direction of the company. Additionally, Springs Window Fashions continues to invest in new technology that minimizes the environmental impact of our manufacturing operations.

Advanced Finishing Technology (AFT)

Environmental responsibility and process innovation are fundamental principles of SWFcontract. All Bali® aluminum horizontal blinds feature state-of-the-art paint processes that result in high-performance products without compromising our corporate commitment to reduce manufacturing waste materials. The aluminum slat material is treated with Advanced Finishing Technology (AFT). AFT delivers anti-static performance to repel dust.

Life & Product Safety

Springs Window Fashions places a high value on the health and safety of its employees, as well as the people who use our products. Springs Window Fashions manufactures a wide range of certified flame-retardant horizontal blinds, vertical blinds and solar and pleated shades.

Lead Free

All products manufactured by Springs Window Fashions meet or exceed the safety guidelines developed for window treatments by the Consumer Products Safety Commission and the Window Coverings Manufacturers Association. Springs Window Fashions only uses lead-free paint and PVC in the manufacturing of all window coverings.

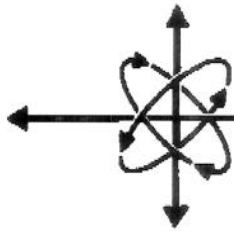
Compliance Certification

Springs Window Fashions certifies that all metal horizontal blinds meet or exceed Federal Specification AA-V-00200-B of June 5, 1973 for Type 1 or Type 2 venetian blinds, with the exception of areas where the federal specification has become obsolete. The American Window Covering Manufacturers Association (AWCMA) document 1029-86 specifies performance standards for metal horizontal blinds. All Bali® metal horizontal blinds meet or exceed these performance standards.

Solar, Thermal and Acoustical Test Information

Product			Solar Optical Properties				Thermal Transmittance Properties				Acoustical
Product	Material	Color	Position	Rs	As	Ts	Shading Coefficient Single Pane	Dbl. Pane	U-Value	R-Value	NRC
Classics	Aluminum	064 Alum Texture	90° up	60.5	38.6	0.9	0.34	N/A	.74	1.35	.10
Micro	Aluminum	064 Alum Texture	90° up	68.0	32.0	0.0	0.28	N/A	.75	1.33	N/A
Vertical	PVC	White	90°	77.8	22.0	0.2	0.22	N/A	.80	1.25	N/A
	Fabric	Off White	90°	66.5	8.9	24.6	0.34	N/A	.83	1.20	N/A
	PVC Channel w/Fabric	Off White White Fabric	90°	74.4	22.5	0.1	0.24	N/A	.72	1.39	N/A
CrystalPleat® Cellular Shades	Fabric	Elegant Neutrals Sparkle	Lowered	55.0	38.0	7.0	0.31	0.25	.303*	3.20*	0.60
	Fabric	Cocoon™ Stonefield	Lowered	38.0	62.0	0.0	0.34	0.30	.339*	3.30*	0.45

U and R-Value results based on single pane 1/4" glass except those marked with asterisk (), which are based on double panes of 1/8" glass and double-cell fabric.



DIVERSIFIED

TESTING LABORATORIES, INC.

"We Test Per Your Request"

336 WEST FRONT STREET
P.O. BOX 4004
BURLINGTON, NORTH CAROLINA 27215
PHONE (336) 227-7710 • FAX (336) 227-1175
www.diversifiedtestinglabs.com

January 26, 2011

Ms. Rita Sanchez
SPRINGS WINDOW FASHIONS, LLC
7549 Graber Road
Middleton, WI 53562-1096

Reference: Laboratory Test Report
Lab Identification No. 6576
Invoice No. 28152 (Attached)

Dear Ms. Sanchez:

One (1) sample, identified as 1" X 16" COIL ALABASTER (70-050-112), was received and tested in accordance with the National Fire Prevention Association No. 701, "Standard Methods of Fire Tests for Flame Propagation of Textiles and Films, 2010 Edition, (Test 1, Small Scale)". The results are as follows:

<u>Specimen Number</u>	<u>Residual Flame (seconds)</u>	<u>Weight Loss (percent)</u>
1	0.0	0.68
2	0.0	0.91
3	0.0	0.68
4	0.0	2.05
5	0.0	0.91
6	0.0	1.59
7	0.0	0.91
8	0.0	0.68
9	0.0	0.91
10	0.0	1.36
AVG.	0.0	1.07

The sample submitted meets the minimum requirements of the above standard. The average percent weight loss cannot exceed 40% and the weight loss of individual specimens cannot exceed mean value plus three standard deviations. The average residual flame cannot exceed 2.0 seconds.

If there are any questions or when we can be of further assistance, please let us know.

Sincerely,

Kayon S. Matkins

KSM/mr
Attachment



Children Can Strangle in Window Covering Cords

In cooperation with the U.S. Consumer Product Safety Commission (CPSC), the Window Covering Safety Council (WCSC) announced recalls to repair horizontal window blinds to prevent the risk of strangulation to young children. The recalls involved millions of window blinds with pull cords and inner cords that can form a loop and cause strangulation.

From 1991 to 2000, CPSC received reports of 160 strangulations involving cords on window blinds: 140 strangulations involved the outer pull cords, and 20 involved the inner cords that run through the blind slats.

In 1994, CPSC worked with the window covering industry to redesign new window blinds to eliminate the outer loop on the end of the pull cords and provide free repair kits so consumers could fix their existing blinds. Window blinds sold since 1995 no longer have pull cords ending in loops.

In 1999, CPSC began a new investigation of window blind deaths. In an extensive review of incidents, CPSC found that children could also become entangled in the inner cords that are used to raise the slats of blinds. These entrapments occur when a young child pulls on an inner cord and it forms a loop that a child can hang in. All of these deaths involved children in cribs or playpens placed next to windows. In most cases, the outer pull cords were placed out of reach, but the children still strangled when they pulled on the inner cords of the blinds. The strangulation victims ranged in age from 9 months to 17 months.

As a result of the CPSC investigation, the industry has further redesigned window blinds. Window blinds sold since November 2000 have attachments on the pull cords so that the inner cords can't form a loop if pulled by a young child. Consumers with blinds bought before Nov. 2000 should repair them.

Consumers who have window blinds with loops should immediately visit WCSC (windowcoverings.org) or call 800-506-4636 to receive a free repair kit for each set of blinds. The repair kit includes small plastic attachments to prevent inner cords from being pulled loose. Instructions for cord stop installation (windowcoverings.org) are easy and repair can be done in minutes without removing blinds.

Important Safety Recall!

Inner cords on horizontal blinds can form a loop that **can hang infants and toddlers.**

To prevent strangulation, be sure safety cord stops are installed on blinds.



For Free Fix-It Kit call Window Covering Safety Council:

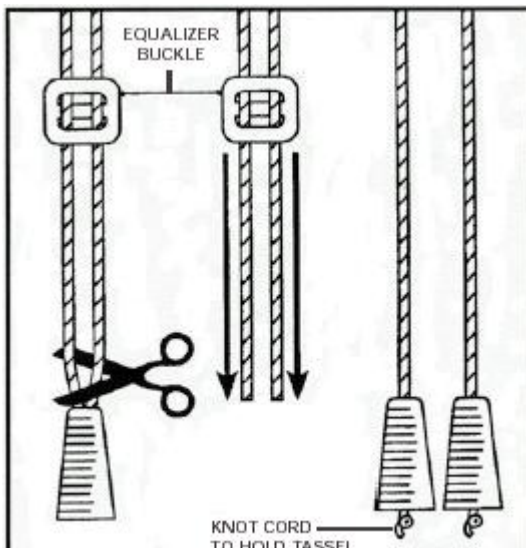
1-800-506-4636

Remember! Keep cribs away from windows!
For more information contact:

U.S. Consumer Product Safety Commission (CPSC)
Washington, D.C. 20207

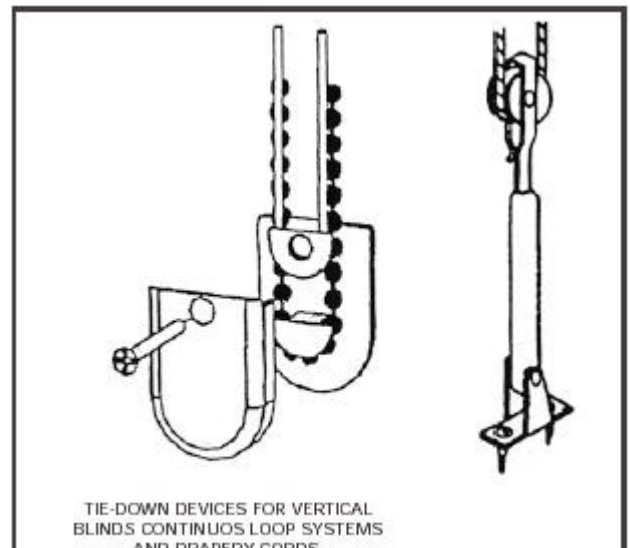
Toll-Free Hotline: (800) 638-2772
Website: www.cpsc.gov

U.S. Consumer Product Safety Commission



The kit also includes safety tassels for pre- 1995 window blinds with outer pull cords ending in loops. Consumers should cut the loops and install the safety tassel at the end of each pull cord (left illustration).

Consumers who have vertical blinds, draperies or pleated shades with continuous loop cords can also order from the same toll-free number a special tiedown to prevent strangulation in those window coverings (right illustration)



Parents should keep window covering cords and chains permanently out of the reach of children. Never place a child's crib or playpen within reach of a window blind. Unless the cords can be completely removed from the child's reach, including when the child climbs on furniture, CPSC recommends against knotting or tying the cords together because this creates a new loop in which a child could become entangled.

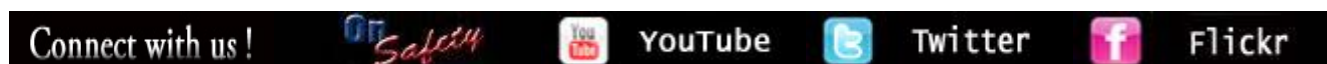
030328

Consumers can obtain this publication and additional publication information from the [Publications section](#) of CPSC's web site or by sending your publication request to info@cpsc.gov.

This document is in the public domain. It may be reproduced without change in part or whole by an individual or organization without permission. If it is reproduced, however, the Commission would appreciate knowing how it is used. Write the U.S. Consumer Product Safety Commission, Office of Information and Public Affairs, 4330 East West Highway, Bethesda, MD 20814 or send an e-mail via CPSC's [On-Line Form](#).

The U.S. Consumer Product Safety Commission is charged with protecting the public from unreasonable risks of serious injury or death from thousands of types of consumer products under the agency's jurisdiction. The CPSC is committed to protecting consumers and families from products that pose a fire, electrical, chemical, or mechanical hazard. The CPSC's work to ensure the safety of consumer products - such as toys, cribs, power tools, cigarette lighters, and household chemicals - contributed significantly to the decline in the rate of deaths and injuries associated with consumer products over the past 30 years.

To report a dangerous product or a product-related injury, call CPSC's hotline at (800) 638-2772 or CPSC's teletypewriter at (301) 595-7054, or visit CPSC's web site at www.cpsc.gov/talk.html. To join a CPSC email subscription list, please go to <https://www.cpsc.gov/cpsclist.aspx>. Consumers can obtain this release and recall information at CPSC's Web site at www.cpsc.gov.



[Consumer Safety \(Home\)](#) | [About CPSC](#) | [Library](#) | [Business](#)

LIMITED WARRANTY

Springs Window Fashions, LLC ("SWF") provides the following warranties on its Bali®, Graber® and SWFcontract™ products:

TYPE OF WARRANTY

Limited lifetime warranty on all Bali®, Graber® and SWFcontract™ products sold by SWF or by an authorized dealer, other than the products listed below, which have the limited warranty periods as indicated:

2" vinyl and acrylic slats	Three years
Drapery hardware	Three years
FashionPleat pleated shade fabrics	Three years
Vertical louvers (vanes)	Three years
Exterior solar shade products	Five years
Motorization components & accessories (batteries not included)	Five years
Wood and faux wood slats (including composites)	Five years

WHAT IS COVERED

Products are warranted against original defects in materials or workmanship during the specified warranty period.

WHAT IS NOT COVERED

This Limited Warranty does not cover:

- Conditions or damage caused by abuse, accidents, alterations, misuse or failure to follow instructions for measurement, installation, use, cleaning or maintenance, including those instructions found at the end of this Limited Warranty.
- Normal wear and tear, including but not limited to fading or yellowing over the lifetime of the product, deterioration when exposed to sunlight for prolonged periods of time, and cord failure as a result of wearing out over time.
- Variations in colors from lot to lot (colors may not exactly match samples or previously purchased products).
- Products that are unusable by reason of mis-measurement or installation not in accordance with the instructions provided by SWF.
- For all products other than exterior solar shades, damage resulting from non-interior applications, exposure to outdoor elements, or extremely high humidity environments.

WHO IS COVERED

This Limited Warranty extends only to the original purchaser.

SWF's OBLIGATIONS

SWF's obligations under this Limited Warranty are limited to the repair or replacement of defective parts or products. SWF is not responsible for shipping costs or labor costs associated with measuring, removing or reinstalling products. Repairs or replacements under this Limited Warranty will be made with like or similar parts.

LIMITATION OF DAMAGES / DISCLAIMER OF WARRANTIES

THIS LIMITED WARRANTY DOES NOT COVER, AND IS INTENDED TO EXCLUDE, ANY AND ALL LIABILITY OF SWF, WHETHER UNDER THIS LIMITED WARRANTY OR UNDER ANY WARRANTY IMPLIED BY LAW, FOR ANY INDIRECT OR CONSEQUENTIAL DAMAGES. EXCEPT AS EXPRESSLY PROVIDED IN THIS LIMITED WARRANTY, SWF HEREBY DISCLAIMS ALL WARRANTIES TO THE EXTENT PERMITTED BY LAW. ANY IMPLIED WARRANTIES THAT CANNOT BE DISCLAIMED ARE, TO THE EXTENT PERMITTED BY LAW, LIMITED IN DURATION TO FIVE (5) YEARS.

Some states do not allow the exclusion or limitation of incidental or consequential damages, so the foregoing limitation or exclusion may not apply to you. This Limited Warranty gives specific legal rights, and you may also have other rights that vary from state to state. No person is authorized to extend or alter this Limited Warranty.

WARRANTY SERVICE

To obtain warranty service, contact the dealer from whom the product was purchased. The dealer will work with SWF to arrange for inspection of the product and warranty service as appropriate.

Warranty claims must be accompanied by the original sales information as well as relevant details regarding the claim, including the nature of the problem, the location of the product, cleaning/maintenance history, etc.

CLEANING AND MAINTENANCE INSTRUCTIONS

Aluminum, Vinyl, and Faux Wood Horizontal Blinds, Faux Wood Shutters, and Pleated Shades may be cleaned with mild soap and water only.

Roller shade fabric may be cleaned by regular dusting or vacuuming with a soft brush attachment. For stained shades, sponge the fabric with a mild detergent and thoroughly rinse. Allow the shade to dry completely before raising. Do NOT completely immerse the fabric. If commercial spot cleaners are used, they must first be tested and allowed to dry on an inconspicuous area, to ensure compatibility.

Solar shade fabric may be cleaned by occasional vacuuming. For stained shades, brush the fabric with a mild detergent and thoroughly rinse. Allow the shade to dry completely before raising. Do NOT completely immerse the fabric. If commercial spot cleaners or diluted bleach mixtures are used, they must first be tested and allowed to dry on an inconspicuous area, to ensure compatibility.

Vertical fabric louvers may be cleaned with regular dusting or vacuuming with a soft brush attachment. Vertical vinyl louvers may be cleaned by using mild detergent and warm water.

Wood blinds may be cleaned by occasional light vacuuming with a brush attachment. More severe soiling can be removed from painted wood blinds by using a soft cloth. Stained wood blinds can be treated with a soft cloth and lemon oil or other wood preservatives.

Wood shutters may be cleaned by occasional light vacuuming with a brush attachment. For minor soiled areas, clean with warm water using a clean cotton cloth. Dry with a second clean cotton cloth. For more severe soiling, use a mild detergent diluted to a 5% solution with room temperature water. Clean with a cotton cloth. Wipe area with clear water to remove any detergent residue and dry with cotton cloth.

Cellular shade fabric may be cleaned by regular dusting or vacuuming with a soft brush attachment. For soil removal, sponge the fabric with a mild detergent and warm water solution and blot dry. If deeper cleaning is desired, ultrasonic or injection/extraction cleaning may be done by a professional blind cleaner.

Professional blind cleaners use a variety of methods to clean blinds and vary in their capabilities. While Springs Window Fashions knows that many of our window treatments can be safely cleaned using the appropriate ultrasonic or injection/extraction cleaning methods, we cannot guarantee the outcome of any cleaning services provided by an independent company. For assistance in locating a certified blind cleaner that serves your area, visit www.blindcleaners.net.

Do not use cleaning methods involving heat, bleach, abrasives, or solvents. Use of these methods will void the warranty.